

Rittal – The System.

Faster – better – everywhere.

EPLAN

efficient engineering.

Rittal + Eplan
Innovations
2026





Perfectly coordinated software solutions, system technology, machinery and services deliver unique competitive advantages in panel building and switchgear manufacturing.



Discover what's possible.

Put your trust in **Rittal and Eplan** – your partners of choice for future-proof panel building and switchgear manufacturing – and discover solutions you can use to reduce throughput times, drive down costs and boost productivity.



Find out more about the range of solutions from Rittal:

www.rittal.com



Find out more about Eplan solutions:

www.eplan-software.com/solutions



Rittal and Eplan

Your partners of choice for software, automation, hardware and service.

The digital revolution has really taken off. With their unique combination of hardware and software, Rittal and Eplan are true pioneers in industrial automation.

The quality of products and services used to be the key success factor, but having the most efficient process is now just as important as a high-quality product in gaining a vital edge over the competition. Switchgear manufacturers that focus on the entire production chain – from planning and designing a product through to the placing of orders, production, delivery and service operations – will increase their throughput, boost their efficiency and achieve major competitive advantages.

Our solutions will optimise and digitalise your entire process. As the customer, you are our main focus. We will support you through the digital transformation with consistent, data-driven solutions that connect engineering and production.

Rittal and Eplan provide the technological foundations and specific solutions that offer added value – but that's not all. With more than six decades of experience and expertise to draw on, we are always one step ahead of the future. We have always understood our customers' processes perfectly. We know what is possible and what works well – and we are experts at putting these very solutions into practice. This is in our very DNA – it is what drives us and will inspire you, too.

Our aim is to be a future partner for our customers – including you.



Eplan Software – Seize the opportunities offered by digitalisation



The digital transformation poses challenges across all segments of industry. The world is changing. If a company wants to remain competitive in the Industry 4.0 era, standing still is not an option. Rittal offers end-to-end solutions and services tailored to your industry which can help future-proof your engineering processes.



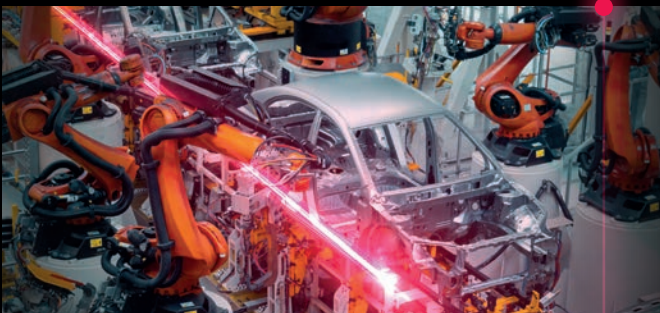
Mechanical and plant engineering

Engineering solutions from Eplan are designed to optimise your processes, from electrical design through to manufacturing. The Eplan platform enables systematic standardisation and automation to boost the efficiency of your engineering.



Enclosure manufacturing

Eplan delivers powerful engineering solutions for electrical design in enclosure and switchgear manufacturing. In collaboration with Rittal, we facilitate continuity and automated processes, from engineering through to enclosure manufacturing.



Automotive industry

OEMs and suppliers trust in scalable, seamless solutions from Eplan as a future-proof engineering ecosystem. See a tangible improvement in efficiency with standardised workflows, automated documentation and complete system integration.

Building services

Eplan connects planners, system integrators and operators on one seamless data platform. From specification through to operation, with standardised exchange formats for faster, more reliable coordination processes.



Energy

The energy transition is powering ahead, thanks to our coordinated software and hardware solutions: Eplan and Rittal help planners, manufacturers and grid operators to plan and execute modern switchgear and complex infrastructures and also integrate renewables.



Process industry

Eplan's engineering solutions combine the planning, execution and operation of process systems, delivering precise engineering, reliable documentation and compliance with the relevant standards. Improve your efficiency, flexibility and sustainability.



Maritime industry

Eplan offers tried-and-tested engineering solutions for planning, operation, maintenance and documentation, from shipping operations and offshore infrastructures through to port logistics and hydraulic engineering.



Food and beverage

Whether you operate a dairy, a brewery or a bakery, Eplan's engineering solutions can deliver seamless processes for efficient planning, standard-compliant documentation and faster maintenance. For consistent data at every stage in the plant life cycle.



Eplan Platform



Engineering software for automation and energy technology

The Eplan Platform combines software solutions for a range of different engineering disciplines: With piping and instrumentation diagrams, wiring plans, comprehensive evaluations, 3D enclosure layouts and 3D cabling, it creates a complete digital twin of your machine or plant automation system.

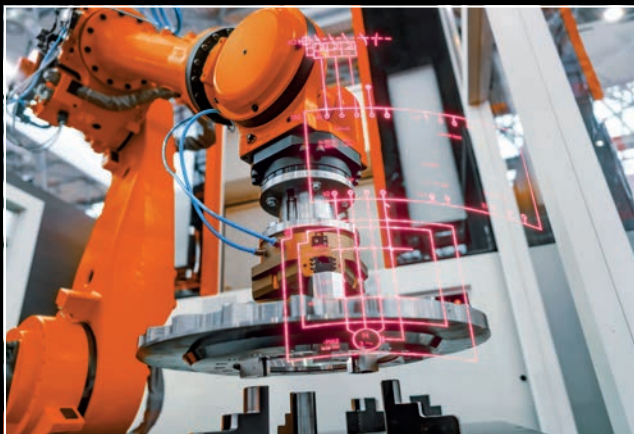
Eplan is the standard format in electrical design. By facilitating the simple exchange of projects, plant operators are able to collaborate with machine, plant and enclosure manufacturers on a uniform database.



Find out more about Eplan Platform:

www.eplan-software.com/eplan-platform

Eplan Electric P8



More than just ECAD

Eplan Electric P8 is your engineering and documentation solution for projects in the mechanical and plant engineering, automation and control engineering sectors.

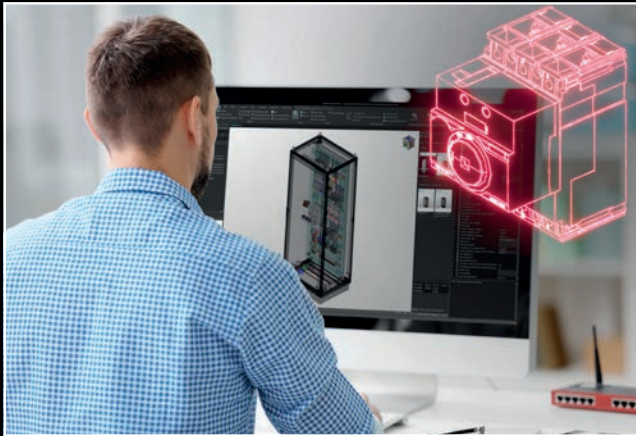
Eplan Electric P8 offers far more than a conventional ECAD solution, with rapid wiring plan generation including component, device and cable data. Its design-supporting functions such as automatic connections, online checks, translations and automated evaluations help you generate project-related documents in next to no time.



Find out more about Eplan Electric P8:

www.eplan-software.com/electric-p8

Eplan Pro Panel



From documentation to 3D layout

Create a 3D digital enclosure model based on your wiring plan data, so your production team gets a comprehensive description of the enclosure layout and related production data. Eplan Pro Panel is tailored specifically to the requirements of electrical design, with easy-to-create 3D layouts.

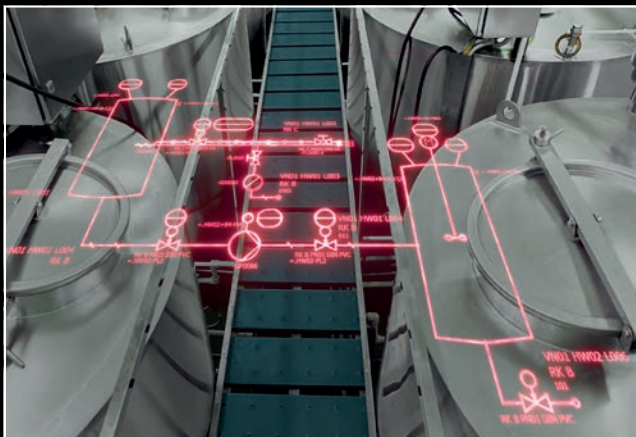
Eplan delivers digital data as the basis for industrialising your enclosure production. Use Eplan Pro Panel to create the digital twin of an enclosure, controlgear or switchgear.



Find out more about
Eplan Pro Panel:

[www.eplan-software.com/
pro-panel](http://www.eplan-software.com/pro-panel)

Eplan Preplanning



Digitalised planning – from day one

Eplan Preplanning allows you to log and manage engineering data early in the pre-planning process.

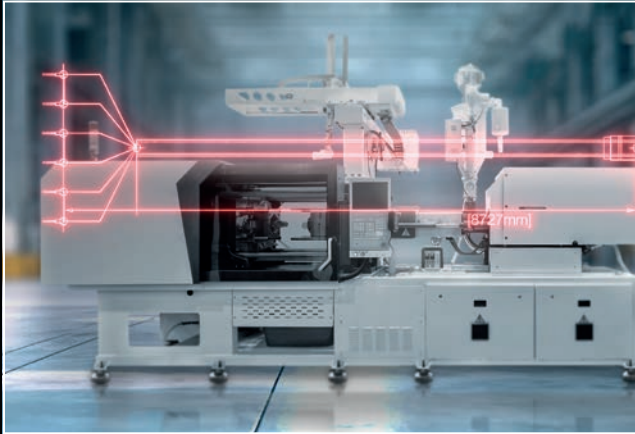
It helps you create plant overviews in the form of piping and instrumentation diagrams, record plant structures, and import engineering data from external spreadsheets so you can generate the initial data sheets and specifications for material procurement quickly. The data collated in Eplan Preplanning slots seamlessly into the detailed engineering phase and can be used e.g. to generate electrical wiring plan and enclosure layouts.



Find out more about
Eplan Preplanning:

[www.eplan-software.com/
preplanning](http://www.eplan-software.com/preplanning)

Eplan Cable proD



Cable planning and assembly

Mechanical engineering demands precision throughout the entire product lifecycle. Defective or inadequately documented cabling will influence assembly, commissioning and sign-off, and results in protracted downtime for servicing.

With this in mind, Eplan has developed a software solution specifically for machine cabling: Eplan Cable proD. A digital twin of the cabling shows the layout of cables and defines their length. This means that cables sold by the metre and preassembled cables can be ordered or prepared to fit. The digital twin also assists with assembly, ensuring that it runs smoothly and rapidly.



Find out more about Eplan Cable proD:

www.eplan-software.com/cable-prod

Eplan Data Portal



The Eplan Data Portal provides access to millions of device and component data for electrical engineering and enclosure manufacturing. Use this central database to plan and design your entire electrical and control engineering.

Hundreds of top manufacturers have their component data available to download from the one-stop Eplan Data Portal. This includes master data such as commercial and technical data, wiring plan macros, 3D graphics, image files, links and much more besides. Everything is designed so that these data records can be used directly to generate wiring plans or enclosure assemblies in Eplan with no further processing.



Find out more about Eplan Data Portal:

www.eplan-software.com/eplan-data-portal

Eplan Smart Production



Find out more about
Eplan Smart Production:

[www.eplan-software.com/
smart-production](http://www.eplan-software.com/smart-production)

Intuitive assembly and clever wiring in enclosure manufacturing

Eplan Smart Production is an assistance system for enclosure manufacturing personnel, providing checklists to guide them through the individual processes in component assembly and enclosure wiring.

The system provides the information needed for each work stage. A 3D model of the enclosure ensures a deeper understanding of the actions required for each step.

The consolidated rendering of relevant information, supplemented with additional flash-up instructions as needed, saves the time-consuming process of searching through the project documentation. Assembly and wiring instructions are automatically generated from the digital twin, so that new colleagues can be trained far more quickly.

Eplan Collaboration Apps



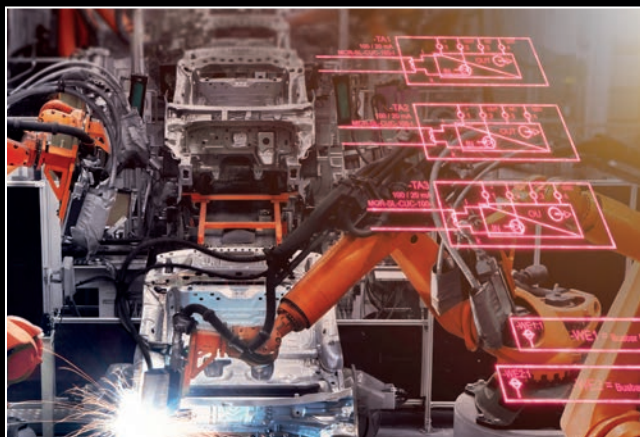
Find out more about
Eplan Collaboration Apps:

[www.eplan-software.com/
collaboration-apps](http://www.eplan-software.com/collaboration-apps)

Comprehensive access, simple collaboration

Eplan is synonymous with next-level solutions in electrical engineering. For us, this means more than simply developing highly specialised products. It's about designing processes efficiently. Our Collaboration Apps pursue the same objective. Through data management, inventory management and project viewers, they support collaboration from any location and provide direct access to Eplan projects and relevant data.

Eplan Engineering Configuration



Eplan Engineering Configuration (EEC) allows you to emulate your engineering templates in a modular system with interdisciplinary functional units. On this basis, EEC automatically generates engineering documentation from upstream configurators.

EEC uses an interdisciplinary approach which unites sales, order fulfillment, electrical engineering, control engineering, production and documentation. For optimum results, link EEC with upstream configurators in sales, order processing, a database or your homepage.



Find out more about
Eplan Engineering Configuration:

www.eplan-software.com/eec

Eplan Education



Eplan Education has been created specifically for teaching and includes a software package and a comprehensive training concept.

Lecturers can use the tool in lessons to create practical electrical designs with their students: Circuit diagrams based on the industry standard or digital twins as the basis for enclosure manufacturing, for example.

School pupils, students and apprentices receive software licences free of charge for private use.

Many companies use Eplan as their software of choice for electrical design. Eplan Education therefore builds bridges between theory and practice.



Find out more about
Eplan Education for lecturers:

www.eplan-software.com/classrooms



Find out more about
Eplan Education for students:

www.eplan-software.com/students

RiPanel



Your cutting-edge tool for individual enclosure system configuration

Key functions at a glance:

- User-friendly interface
- Plausibility-checked selection of accessories
- Customised cut-outs and import of CAD data
- Automatic generation of technical data

Your benefits:

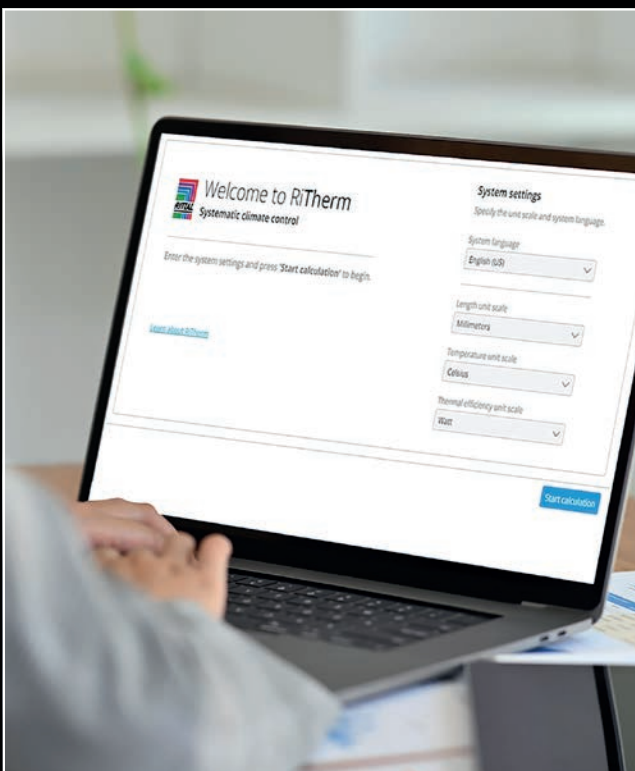
- Save time with configuration and ordering
- Avoid errors with the selection of accessories
- Parts list for improved planning
- Faster processes



Find out more about
RiPanel:

www.rittal.com/RiPanel

RiTherm



Your climate control planning tool for enclosures

Quickly and easily design the correct climate control for your switchgear:

- Integrate thermal calculations into Eplan Pro Panel
- Calculation and selection depending on the ambient conditions (indoor and outdoor applications)
- More accurate costings for bayed enclosures as a result of division into customised “heat loss zones”
- Simplified product selection process based on bespoke product recommendations
- Supporting compliance with international F-gas regulations based on GWP data and review of climate-control design



Find out more about
RiTherm:

www.rittal.com/RiTherm

Rittal ePocket

Digital machine and system documentation at every stage of the value chain

Rittal ePocket ensures fast, straightforward access to complete documentation. Thanks to round-the-clock access to the latest technical documents and wiring schematics, documentation, maintenance and service processes can all be made more efficient.

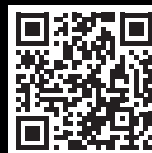


Your design and documentation benefits:

- Save on printing costs when preparing documents
- Reduce your carbon footprint
- Efficiently transfer digital documentation to customers

Your service and maintenance benefits:

- Up-to-the-minute data always available for everybody involved
- Fast change management with the integrated Eplan eVIEW workflow
- Clear tracking of changes



Find out more about Rittal ePocket:

www.rittal.com/epocket

RiPower configurator



RiPower, the cloud-based project planning tool, sets new standards when planning low-voltage switchgear. The tool guides the user through the entire planning process quickly and efficiently, in simple, logical steps.

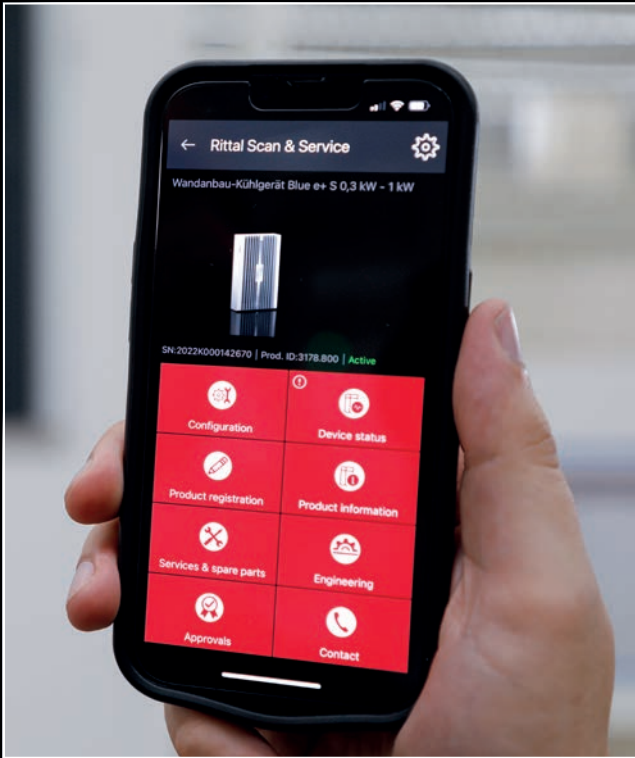
- System documentation including assembly instructions
- With direct access to the online shop, you can order your custom configuration directly
- Supports subsequent processing with the market's leading tools (Eplan P8, AutoCAD, etc.)
- Automatic integration of configuration results via pre-prepared interfaces such as GAEB (XML) for preparing quotes for end customers



Find out more about the RiPower configurator:

www.rittal.com/ripower-configurator

Scan & Service app



Want to configure your climate control devices quickly and easily? Simply scan the QR code on the rating plate for detailed information about every Rittal product. The NFC scan gives an overview of your device statuses for easier configuration. That's no problem when using the Scan & Service app.

- Save time by transferring your settings to other cooling units
- Contact Rittal around the clock
- Easily request accessories and spare parts

Register your product now in the app and get an extended warranty.



Download here:
App Store / Google Play

Rittal Online Shop

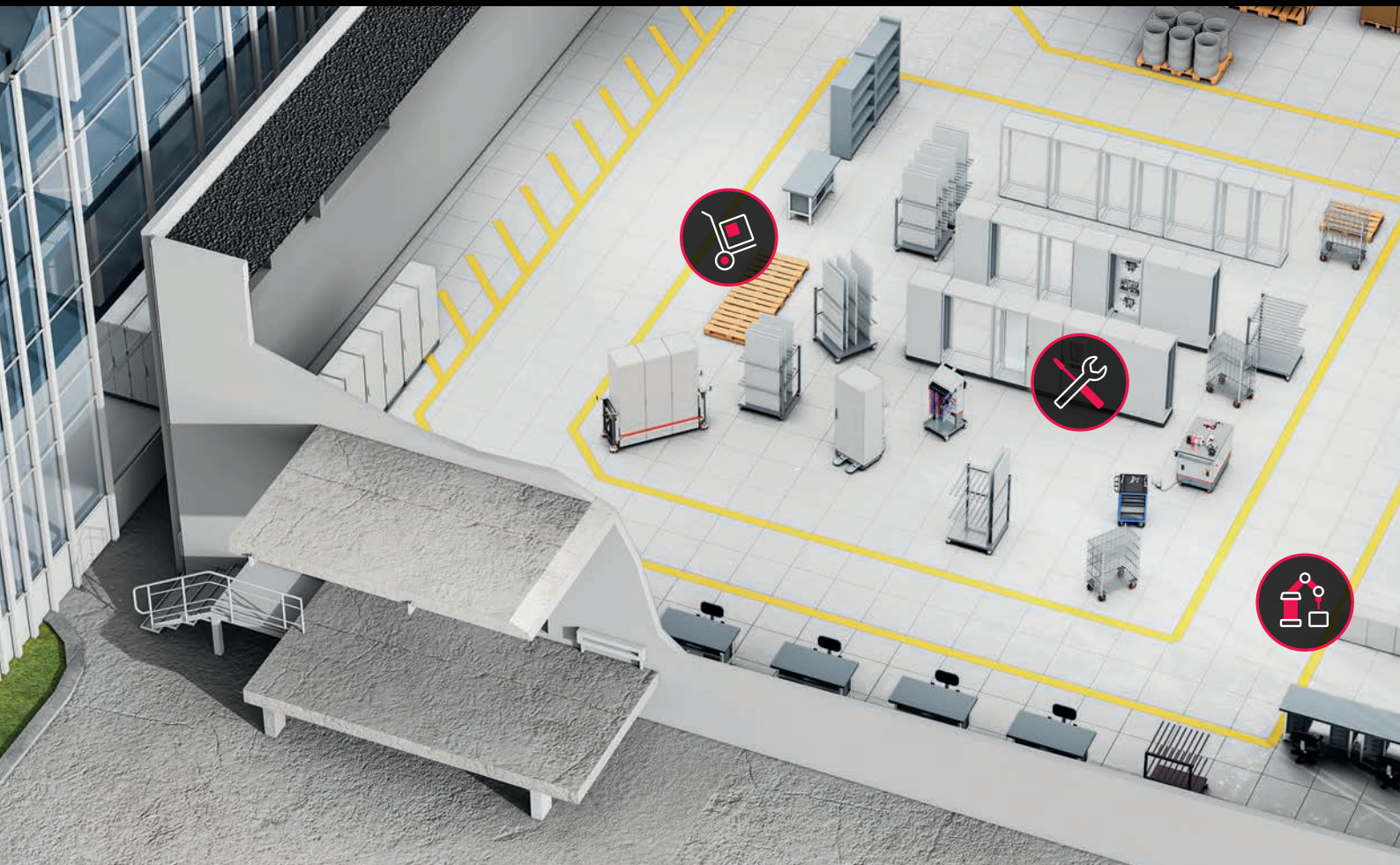
The central point of contact that makes it easy to select from our comprehensive range of enclosures, power distribution systems, climate-control solutions and IT infrastructure products and purchase the products you need.



You can use the online shop to...

- Place orders conveniently, quickly and efficiently – at any time and from any place
- Check the availability of products
- Configure solutions in RiPanel and quickly find accessories and spare parts
- Track orders and view your order history
- Upload and download documents for efficient ordering (PDF, Excel, CSV files)
- Save and share shopping carts and create and edit projects
- Manage user rights – through at least one administrator
- View customised prices, terms and conditions

Solutions by Rittal Automation Systems



Punching



Milling



Laser machining



Busbar machining



Component cutting


Forge ahead safely, one step at a time

The solutions offered by Rittal Automation Systems cover a whole host of individual processes and the entire manufacturing spectrum – from manual tools to fully automated machining centres.


- **Our machines** are fast, precise and exceptionally efficient at machining enclosures and components.
- Our **automated solutions** for wire processing deliver huge efficiency gains.
- **Ergonomic handling tools** optimise operations on the shop floor.
- **Tailored advice** and bespoke solutions for each step in your automation journey.
- Our **professional hand tools** support fatigue-free work.




Component
mounting



Wire
processing



Wiring



Handling



Hand tools

Rittal Automation Systems –

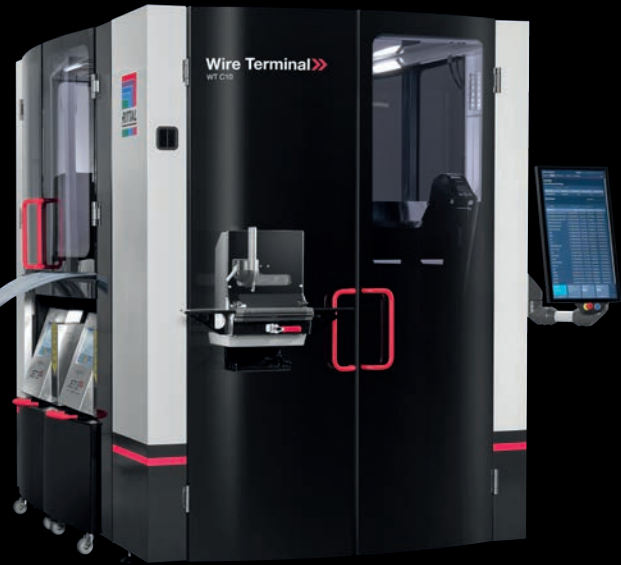
The best way to automate and optimise workflows and processes in panel building and switchgear manufacturing.



Further information:

www.rittal.com/ras

Wire Terminal WT



Now up to

15 times faster,
thanks to consistent
process optimisation

Speed up your wire processing:

The Wire Terminal WT C fully automated wire processing machine automatically processes and labels wires.

A fully integrated crimper solution that uses servo technology and has been specially modified for the application ensures that wires with cross sections from 0.5 to 6 mm² can be stripped fully or partially to any length or fitted with wire end ferrules in various lengths. The WT Tube 12 wire store is ideal for simple wire changeovers. The modular system features modern wire routing including wire infeed block with quick-change system and RFID memory.

Sequential wire output into a wire rail system is an additional benefit. Depending on the project, wires may be delivered in the form of a chain bundle, or via just-in-time manufacturing with direct transfer to the wire handling system.

Boost your clock speeds and improve processes fully automatically, for cross-sections ranging from 0.5 mm² to 6 mm².

The new Wire Terminal WT L machine series can machine up to 12 wires with cross-sections ranging from 0.5 – 6 mm² without retooling.

Wire output is in the form of a practical chain bundle, on an order-specific basis in wire rail magazines, or just-in-time via the integral wire handling system.



Availability: Please talk to your sales advisor.



Find out more about the
Wire Terminal WT:

www.rittal.com/wire-processing

We reserve the right to make technical modifications.

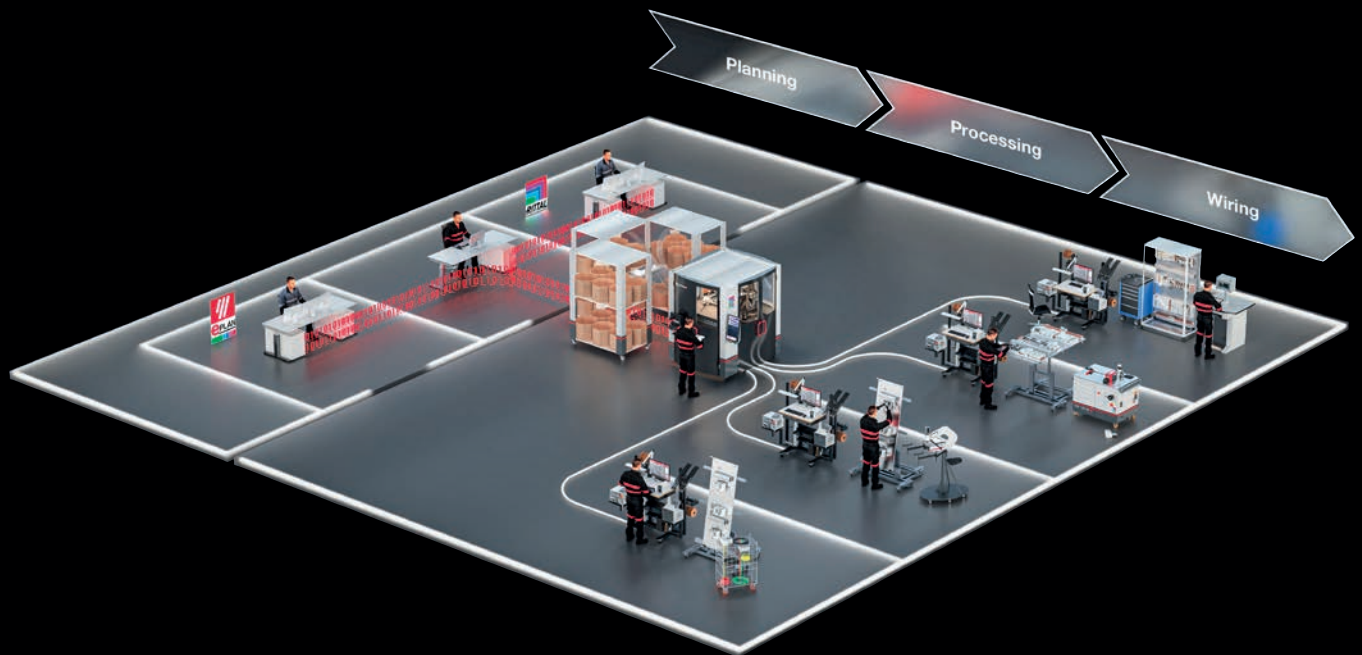
Wire Handling System

Wire Handling System for Wire Terminal WT

The Wire Handling System (WHS) supports the wiring process under the Eplan Smart Wiring operative assistance system. With an optional, additional wire feeder unit in the wire terminal, wires are manufactured just-in-time and transferred to the WHS distribution system, which uses compressed air to distribute them to a maximum of 4 wiring stations over distances of up to 80 metres.

Wires are requested on a project-specific basis by simply clicking on a button in the “Eplan Smart Production” software tool. The assembled wire is available in a matter of seconds and can be processed directly in the wiring project.

Reduced
throughput times
with **automated**
wire delivery



Other benefits:

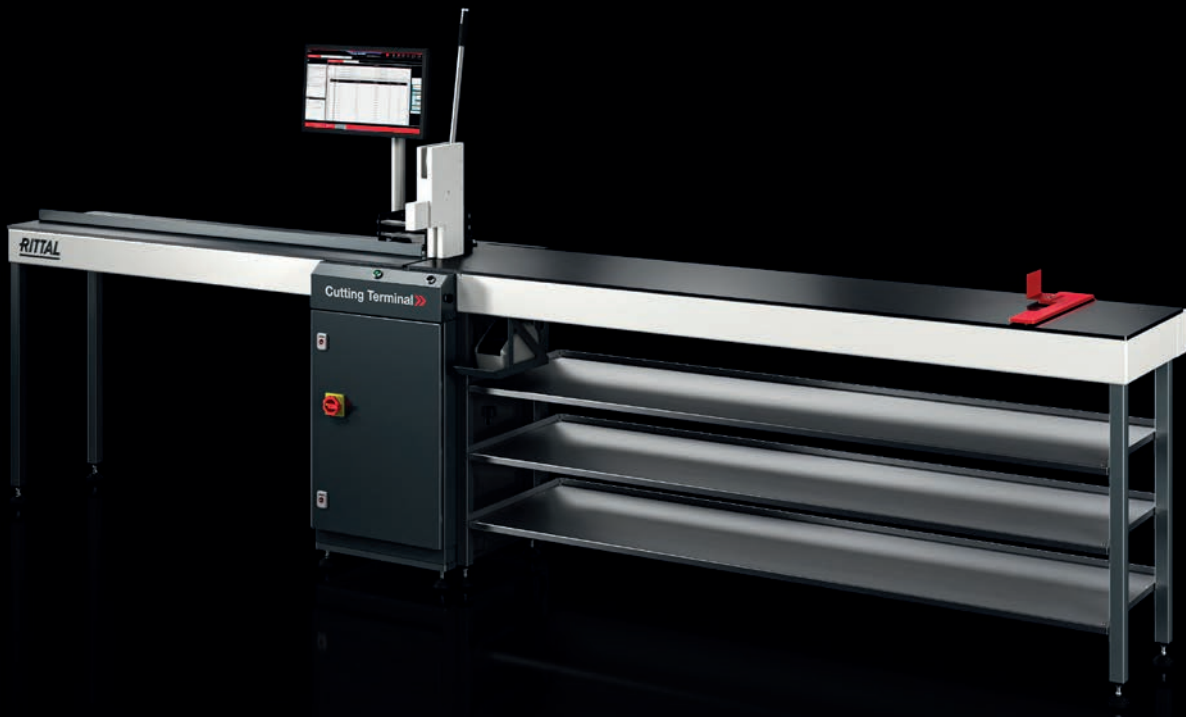
- Wire manufacturing based on the just-in-time and just-in-sequence principles
- Direct addressing helps to minimise errors in workstation commissioning
- Save time and resources with automated wire infeed
- Data continuity throughout the entire process chain
- Step-by-step operative instructions with Eplan Smart Production



Find out more about our new automation solutions:

www.rittal.com/wire-terminal

Cutting Terminal CT



We reserve the right to make technical modifications.

User-friendly length cutting with reduced wastage

Cut wiring ducts, cable duct covers and support rails to the precise length required with our new Cutting Terminal CT M and Cutting Terminal CT H cutting centres. The integrated manual cutting tools offer a user-friendly, simple and burr-free means of cutting to length.

The Cutting Terminal CT H variant offers hydraulically assisted cutting for support rails.

Data supplied from engineering plus automated end stops in the cutting terminal support the workshop process and ensure cut optimisation even across multiple projects.

Full connectivity and data continuity from designing and planning through to the production processes delivers an integrated, cross-process product solution.

Availability: Please talk to your sales advisor.

Other benefits:

- Fast, precise, dependable working
- Waste-related costs can be optimised across multiple projects.
- Modern touch screen
- As an additional function, round holes and horizontal and vertical slots can also be punched into support rails.
- Five DIN rail sizes in one template with dimensions of 35 x 7.5 mm, 35 x 15 mm, 15 x 5.5 mm and copper earth rails with dimensions of 10 x 3 mm and C rails 34 x 15 mm. G rails to EN 60715 can also be cut to length.
- Dimensions of wiring ducts that can be processed: width 15 – 125 mm and height max. 100 mm

Moreover, the RiPanel Processing Center order management tool provides an efficient solution for managing production and machine jobs. This means you can rely on dependable production control and planning confidence.

Integrated component labelling also assists with subsequent order picking and the placement of processed rails and conduits on the mounting plate. During later stages in the process, the QR code on the label can be used with Eplan Smart Mounting to visualise the placement of the component that has been cut to length.



Find out more about our new automation solutions:

www.rittal.com/Cutting-Terminal

Punching Terminal PT S4

Smooth, reliable machining with modern, intuitive operation

The Punching Terminal PT S4 is ideally suited for entry-level automated busbar machining. Accommodating up to 4 tools with a quick-change function, this product solution allows you to punch and cut flat materials quickly and precisely to the required length.

With powerful tool springs and correspondingly high retraction forces, even thick copper bars are punched extremely cleanly, so that no reworking is required.



The seamless data communication via Ethernet ensures professional machine monitoring and production analysis to boost your production efficiency.

Other benefits:

- Compact design
- Machining of copper and (on request) aluminium busbars
- Busbar sizes from 15 mm to 127 mm in width and 3 mm to 16 mm in thickness

Availability: Please talk to your sales advisor.



Find out more about our new automation solutions:

www.rittal.com/Punching-Terminal

Bending Terminal BT 20E

Pioneering energy-saving drive

The new electric bending machine for busbar machining can be used for many different types of bending, such as multi-stack, flat, edge, closed and U-shaped bending.



The electric drive makes the Bending Terminal BT 20E particularly quiet, low-maintenance and efficient. The special plug-in system supports user-friendly tool changes, quick set-up times and exceptionally precise bending results.

Depending on the type of bending, flat materials up to 160 mm wide and up to 20 mm thick can be processed. The maximum bending force is 240 kN and the bending precision is 0.2°.

Availability: Please talk to your sales advisor.



Find out more about our new automation solutions:

www.rittal.com/Bending-Terminal

Enclosures



Product group		Small enclosures	Compact enclosures	Hygienic Design	
		Tough enough to take it all – there are practically no limits to the scope of applications for these especially robust small and compact enclosures. Electrical, electronic and pneumatic components are securely protected with a high IK impact resistance.		Hygienic Design (HD) enclosures are key elements in the design of open processes in the food industry due to their ease of cleaning.	
Material	Sheet steel	■	■	–	
	Stainless steel	■	■	■	
	Plastic	■	■	–	
	Aluminium	■	–	–	
Dimension options		More than 160 small enclosures and 160 compact enclosures in a range of individual materials and designs.		30 different enclosure types and sizes.	
Product characteristics		Exceptionally robust and with a high IP and IK protection class, Rittal small and compact enclosures are compliant with all major international approvals and standards.		The range is based on common standards, directives and regulations in the food and beverage industry.	



	Enclosure systems	Console systems	PC enclosure systems	Industrial Workstations	Command panels	Support arm systems	Stand systems
	Ingeniously simple, fully symmetrical, and patented worldwide – this is the successful formula which has established the VX25 / VX SE as a global standard.	Versatility through modularity – essential for meeting individual customer requirements for machine and plant operation perfectly and cost-effectively.			Always exactly the right position: Different viewing angles of the machine, tall or short operating staff – find your perfect ergonomic solution at the human/machine interface.		
	■	■	■	■	■	■	■
	■	■	■	–	■	■	–
	–	–	–	–	–	–	–
	–	–	–	–	■	■	–
	Free-standing and bayed enclosures in more than 120 options for controlgear production and plant manufacturing.	Choose from console systems in over 30 combination variants, 8 PC enclosure systems and 13 variants of Industrial Workstations.			With over 30 command panels, 5 support arm systems with a wide range of combination options and 8 stand systems, there is a solution for every requirement.		
	Infinite installation opportunities, simple assembly, uncompromising baying and tested quality are the distinguishing features of these enclosure systems. QR codes on all machinable components.	Robust and modular, especially designed for tough industrial environments where a high protection category and good accessibility are key factors.			Flexibility, stability, simple assembly and tremendous versatility with product combinations mean that every requirement is catered for.		

AX wall-mounted enclosures, 3-part



Find out more about the
AX wall-mounted enclosure, 3-part:

www.rittal.com/AX-3-part

More flexibility!

The new enclosure with a simplified delivery concept offers more flexibility in terms of product selection and can be used for many applications. It can also be easily fitted out using AX and VX system accessories. One basic enclosure – countless opportunities. Extend without machining using Rittal system accessories.

- The 482.6 mm (19") range may be flexibly used in the centre part (depending on the required installation depth)
- Access from the front and rear for maximum user-friendliness during installation and maintenance

Availability: Off-the-shelf

AX compact enclosure, sheet steel



Find out more about the
AX compact enclosure, sheet steel:

www.rittal.com/ax

New sizes have been added to the AX compact enclosures in sheet steel. The wide enclosures offer an alternative to bayed enclosure suites for various applications, and are ideal as base enclosures in mechanical engineering or for materials handling applications in logistics.

- Simple, flexible interior fit-out
- Configuration without machining

Availability: Off-the-shelf

Ex enclosures for projects



Our popular, tried-and-tested standard Ex enclosures in stainless steel and plastic are joined by the new Ex enclosure platform for projects with more bespoke requirements.

- Various dimensions and defined modification options
- For applications in compliance with IECEx, ATEX and UL Hazloc
- Available in AISI 304 and 316L

Availability: On request



Find out more about
Ex enclosures:

www.rittal.com/Ex-enclosures

CS Toptec, bayable



The bayable CS Toptec transfers the tried-and-trusted buying concept of Rittal large enclosures to the twin-walled outdoor enclosure system. With an extended range of sizes for enclosures up to 2,000 mm high and direct installation options for Blue e+ outdoor cooling units, Toptec is ideal for use in a wide range of outdoor applications.

Benefits at a glance:

- Bayable, twin-walled outdoor enclosure
- Side panels and buying kit selectable as accessories depending on the application
- Flexible interior fit-out with the Rittal modular system

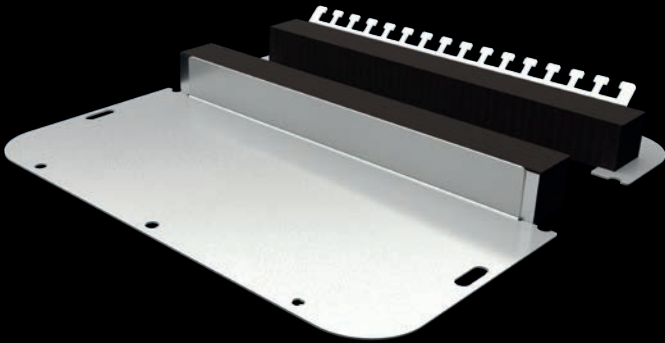
Availability: Off-the-shelf



Find out more about
CS Toptec:

www.rittal.com/cs-toptec

Gland plate, two-part



Find out more about gland plates:

www.rittal.com/2part-gland-plate

Gland plate, two-part – addition to the portfolio

The divided gland plate supports simple mounting on the enclosure and offers a range of different installation options. It enables simple insertion of cables with and without connectors into the enclosure. Special drilled holes in the gland plate ensure automatic potential equalisation during screw-fastening. Bolts, clips and earthing cables are no longer required.

Benefits at a glance:

- Quick and easy cable entry – even for cables with connectors
- Rapid assembly thanks to the divided design
- Automatic potential equalisation

Availability: Off-the-shelf

AX stainless steel



Find out more about AX stainless steel:

www.rittal.com/ax-stainless-steel

Additional AX stainless steel sizes

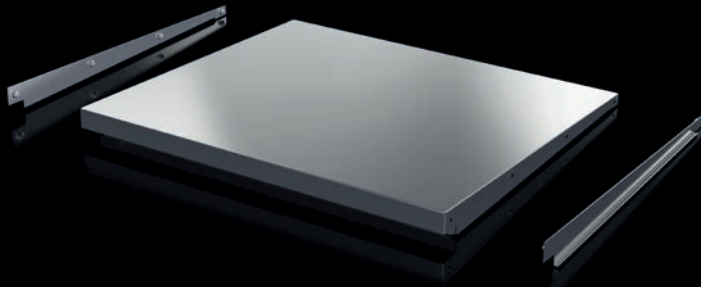
The AX basic enclosure made of stainless steel 1.4404 (AISI 306L) offers reliable protection in corrosive and other challenging industrial environments. Its integrated locator system enables rapid, tool-free interior fit-out without any drilling whatsoever. The enclosure's robust construction, high protection category and modular design make it the ideal solution for flexible and durable system installations.

Benefits at a glance:

- Protection during machining and transportation thanks to laser-resistant protective film
- Addition of further 1.4404 (AISI 306L) sizes to the AX stainless steel portfolio
- Simple and flexible interior fit-out thanks to locators and an interior installation rail

Availability: Q4 2026

Protective roof for VX



The protective roof for VX enclosures offers reliable protection against standing moisture and soiling from above. The sloping design prevents water ingress and extends the service life of your enclosure.

Benefits at a glance:

- Quick and easy assembly
- Increased service life and reduced maintenance for the enclosure
- Material: Stainless steel
- Prevents standing moisture and dirt deposits
- Suitable for buying

Availability: Off-the-shelf



Find out more about the protective roof for VX:

www.rittal.com/vx-protective-roof

Protective roof for AX



The AX protective roof offers reliable protection against rain, dirt and environmental influences. Its sloping design also optimises water run-off and extends the enclosure's service life.

Benefits at a glance:

- Quick and easy assembly
- Material: Stainless steel
- Increased service life and reduced maintenance for the enclosure
- Prevents standing moisture and dirt deposits

Availability: Off-the-shelf



Find out more about the protective roof for AX:

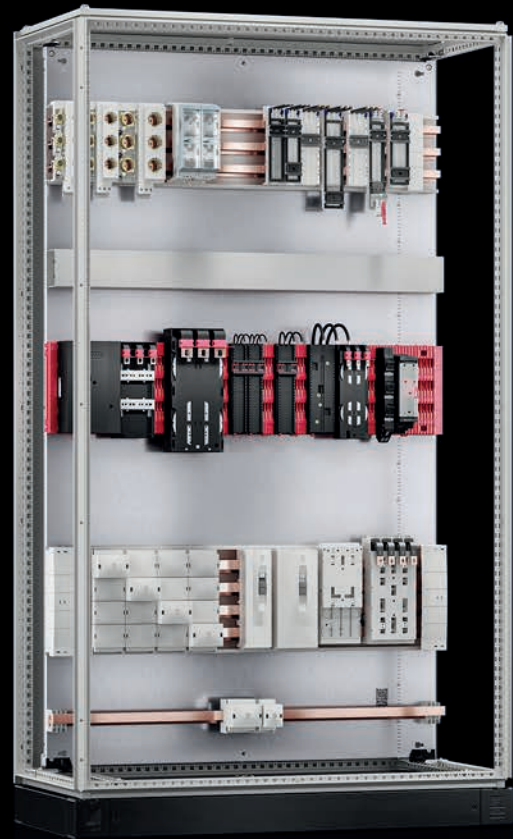
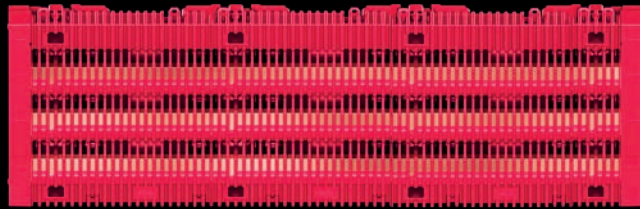
www.rittal.com/ax-protective-roof



reddot winner 2025



GERMAN DESIGN AWARD WINNER 2025



RiLine busbar systems			
	<p>Tried-and-trusted, super-flexible power distribution systems to accommodate individual requirements. From small power distributors, to bespoke switchgear and controlgear systems through to heavy-current power distributors for infrastructure and industry applications. Simple, secure assembly plus user-friendly planning with design verification data are the distinguishing features of these systems.</p>		
Systems	RiLineX	RiLine60	
Bar centre distance mm	60	60	
Rated current A up to	800	800, 1,600	
Product characteristics	<ul style="list-style-type: none"> ■ Save space with unrestricted top-mounting of components across the entire board ■ Contact hazard protection up to IP 3X ■ Tested short-circuit resistance up to 65 kA ■ Suitable for AC and DC applications 	<ul style="list-style-type: none"> ■ Thanks to the special design of the PLS special busbars, components can be installed above them in the support area without any problems ■ Optimum contact hazard protection with all-round encapsulation ■ Tested short-circuit resistance up to 37 kA ■ Suitable for AC and DC applications 	



Ri4Power low-voltage switchgear

The tested complete solution – Enclosure and bar system. Cross-coupling between electrical equipment in low-voltage switchgear has already been tested to IEC 61439. The required design verification data is available.

Modular system for low-voltage switchgear with design certificate data plus power distributors and structured system solutions for switchgear with Form 1-4b separation.

ISV distribution enclosures for standard-compliant power supply in buildings and industry. Flexible configuration with practical power distribution modules.

Ri4Power 185 Compact

Ri4Power Flat-PLS

Ri4Power ISV distribution enclosures and wall-mounted distributors

185

60, 70, 80, 185

60, 100, 185

2,100

6,300

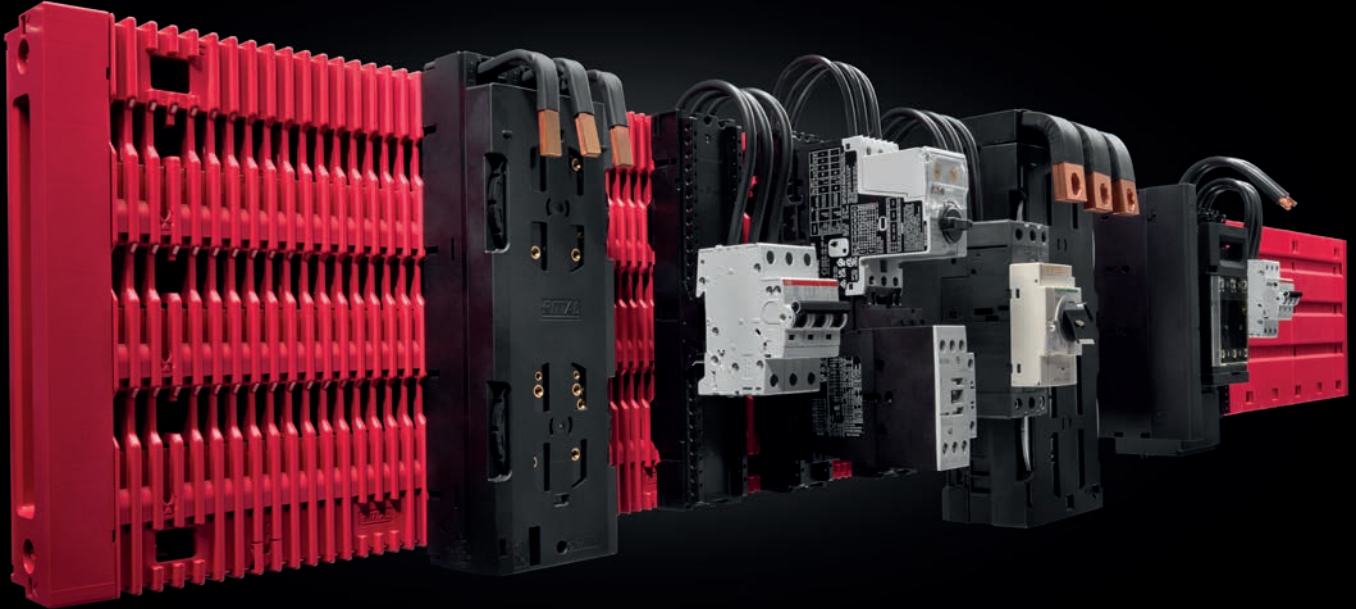
1,600

- Components in the pitch pattern of the cover system can be installed above the busbar support
- Integral busbar shielding in the cover section to prevent accidental arcing
- Components can be installed above the cover section and components can be retrofitted quickly without removing the cover section

- Tested system solutions to international standard IEC 61439-1/-2 with simple generation of the design verification
- High levels of short-circuit withstand strength up to I_{cw} 100 kA for 1 sec./ I_{pk} 220 kA
- Tested accidental arcing protection to IEC 61641

- Distribution enclosures as wall-mounted and free-standing enclosures for individual population with modular elements

RiLineX – The Power Platform – open, flexible and future-proof



The world of panel building and switchgear manufacturing is facing numerous challenges. The skills shortage, growing time and cost pressures, and the increasing complexity of projects call for new solutions. At the same time, the progression of digitalisation means processes must become more efficient. What's needed now are genuine ways to speed things up – especially when it comes to power distribution technology.

RiLineX from Rittal is a 60 mm busbar system that is optimally enhanced by the Rittal Partner Network. This open, manufacturer-neutral system platform offers custom design options and unlocks infinite possibilities. Well-known manufacturers worldwide are developing their components on a licence-free basis on RiLineX. The result is a system that grows to keep pace with your requirements.

Benefits at a glance:

- Fast and efficient planning thanks to a simple system design
- Approximately 30% saving in engineering
- Up to 75% saving in assembly
- Tested short-circuit resistance up to 65 kA
- Suitable for DC and AC applications
- UL and IEC approvals mean the system meets the highest safety standards and can be used worldwide

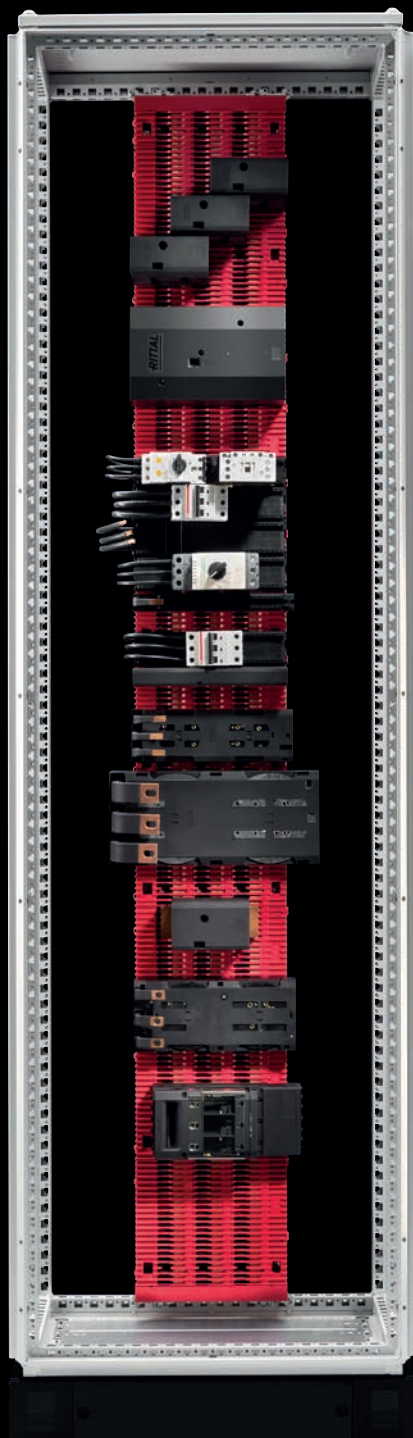
Availability: Off-the-shelf



Find out more about
RiLineX:

www.rittal.com/RiLineX

Rittal Partner Network – new diversity on our platform



Businesses deliver true customer benefits when they don't just supply standalone products and proprietary solutions. We firmly believe that when companies collaborate to create solutions that span their customers' entire value chain, they generate genuine added value. That's exactly where the Rittal Partner Network comes in. Join our network and help us shape the future of power distribution!

Working with you and numerous other technology partners, we are looking to develop holistic solutions that go far beyond individual components. Our goal is to build a global network of experts with the combined skills to create innovative, efficient and future-proof power distribution solutions. Our busbar system platform RiLineX is a prime example. Technology partners such as EFEN, K'Electric, Puls and Lenze are already developing high-quality components for RiLineX – on a licence-free, manufacturer-neutral basis. The result is an open system with maximum flexibility for all kinds of applications – from the process industry and renewable energy all the way through to IT infrastructure.

Benefits at a glance:

- Raise your profile within the Rittal ecosystem
- Become part of an innovative power platform
- Create genuine added value through combined expertise and shared market access



Your link to the
Rittal Partner Network:

www.rittal.com/RiLineX-partner

RiLineX fuse holders – fuse technology for North America



Based on board technology, the fully modular RiLineX 60 mm busbar system is the ideal solution for state-of-the-art industrial applications. Thanks to IEC 61439 and UL 508 approvals, it can be used worldwide. This international compatibility applies to the entire RiLineX portfolio, with the exception of fuse technology. Whereas NH fuses are the norm in Europe and Asia, different standards apply in North America. Rittal now offers components that comply with these standards – class CC and class J fuse holders up to 400 A that have been developed specifically for the North American market. The combination of smart monitoring, ease of use and excellent safety makes these components the ideal solution for cutting-edge industrial applications.

Benefits at a glance:

- Tool-free assembly for quick and easy installation
- Rapid fuse replacement without removing the fuse holder
- Integral visual/electronic fuse monitoring for instant status checking
- Enhanced contact hazard protection ensures maximum safety
- Operator-independent contacting of fuse inserts
- Snap-on technology, with semi-automated adjustment of busbar thickness

Availability: Q2 2026



Find out more about
RiLineX fuse holders:

www.rittal.com/rilinux-fuseholder

Tin-plated copper bars



Find out more about tin-plated copper bars:

www.rittal.com/copper-bars

Copper busbars play a key role in state-of-the-art power supply systems. They are often covered with a thin layer of tin to optimise their functionality and service life. This tin plating has numerous benefits, especially in challenging applications such as industrial plants, mechanical engineering, server rooms and data centres.

Benefits at a glance:

- A tin coating offers reliable protection against oxidation and corrosion – ideal for humid or aggressive environments
- Improved contact performance and reduced contact resistance
- Low contact resistance levels at connection points
- UL and IEC approvals mean the system meets the highest safety standards and can be used worldwide

Availability: Off-the-shelf

Current converter

The smart solution for precise energy monitoring

Rittal current transformers are the ideal current measurement solution for applications in areas such as power distribution, energy management and grid monitoring. Converting current signals directly into proportional voltage signals enables connection to standard measuring equipment and energy management systems without an additional conversion stage.



Benefits at a glance:

- Low-power current transformer (333 mV)
- Models with measuring ranges of 100 to 2,500 A
- For applications requiring a high degree of measurement accuracy (accuracy class 0.5)
- Reliable signal processing in cutting-edge monitoring and measurement systems
- Precise recording of energy data makes it possible to spot potential energy management savings

Availability: Off-the-shelf

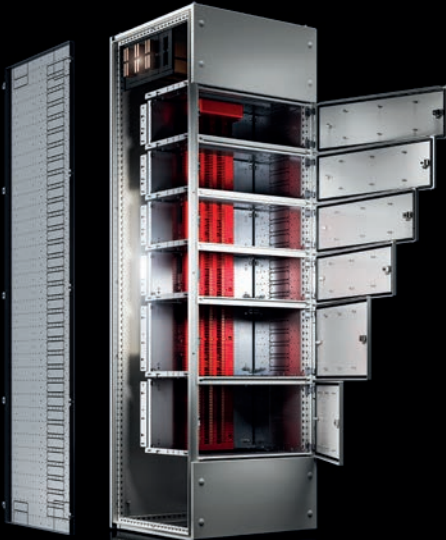


Find out more about current transformers:

www.rittal.com/current-transformer

Ri4Power outgoing section and RiLineX

Ri4Power combined with the new RiLineX busbar system opens up completely new possibilities. Many different components can be combined in the outgoing section – power distributors with control units, for instance. Separate compartments that are shielded from each other are created within the section for this purpose.



Benefits at a glance:

- Form separation up to Form 4b possible
- Safety from the base to the roof thanks to a fully tested system
- Can be configured as required, including custom fitting of compartments with RiLineX system components
- Uncompromising consistency – the fully modular busbar system can be used across all sections and compartments, is exceptionally straightforward to plan and install, and also offers extensive customisation options.

Availability: Q2 2026



Find out more about
Ri4Power:

www.rittal.com/Ri4Power

Ri4Power busbar trunking systems



Busbar trunking systems are used to transport and distribute electrical energy. Ri4Power supports the connection of busbar trunking systems. The main busbar system is positioned in the base area and connected to the low-voltage distributor from above.

Benefits at a glance:

- Suitable for Schneider Electric and EAE Electric busbar trunking systems
- Tested up to 6,300 A

Availability: Q2 2026



Find out more about
Ri4Power:

www.rittal.com/Ri4Power



Application Samples – your head start in engineering

Many industries are facing the challenge of making their energy supply more efficient, more sustainable and future-proof. Our preconfigured Application Samples are the ideal starting point when it comes to your project planning for state-of-the-art energy applications such as DC microgrids, DC distributors and distributors for AC charging points. These real-life applications not only speed up your engineering work, but also the expansion and conversion of your power distribution systems.

You can use Rittal Application Samples as your basic solution. Our forward thinking means it's then quick and easy for you to adapt these to your needs and requirements. The end result is a complete project, including documentation and a digital twin of a distributor.

Benefits at a glance:

- Time and cost benefits thanks to preconfigured, tried-and-tested solutions
- Efficiency due to time saved during engineering, procurement, manufacturing and maintenance
- Pre-assembly service via the Rittal Application Centers located around the world
- Flexible adaptation to changing energy requirements and project sizes



Find out more about
Application Samples:

www.rittal.com/application-sample





Energy storage solutions – for any environment

Whether they are used in industrial, energy supply or data centre applications, today's energy storage solutions need to combine a high level of performance with reliability and scalability. The CS Toptec twin-walled outdoor enclosure does exactly that, providing a weatherproof, modular platform for challenging environments. Thanks to its modular bayability and its interior fit-out versatility, the CS Toptec can adapt flexibly to all commonly used block-shaped battery modules. Support systems can be located on the left or right or in the centre, leaving sufficient space for additional components such as power electronics. The Blue e+ outdoor cooling unit maintains an optimum temperature inside the enclosure. The energy-efficient combination of heat pipe technology and active cooling automatically adjusts its output to the actual demand. Even in extreme weather conditions, the internal temperature remains stable. In cold environments, an enclosure heater may be integrated to protect battery modules from low temperatures.

Benefits at a glance:

- Sufficiently flexible for use with all kinds of battery modules
- Precision cooling may be integrated directly onto the enclosure
- Future-proof thanks to coordinated system components
- Cross-members, mounting angles and mounting brackets can be prefitted or supplied as separate components
- Components are fully compatible with the VX ESS enclosure system
- 75% energy savings compared with conventional solutions

Availability: Off-the-shelf



Find out more about
energy storage solutions:

www.rittal.com/energy-storage-solutions



Temperature solutions for the energy infrastructure of the future

The energy transition places high demands on reliable, efficient temperature control with modern applications. Rittal boasts a powerful range of chiller systems developed specifically for the diverse technologies of the future.

Be it high-power charging (HPC) for electric vehicles, hydrogen refuelling stations for fuel cell electric vehicles (FCEVs) or cooling for battery stores, all these applications rely on precise, active temperature management. Rittal chillers ensure stable operating conditions and optimum temperature control of battery systems – both cooling and heating – that is precisely tailored to the requirements of each individual application.

With speed-controlled components and state-of-the-art inverter technology, the systems are exceptionally energy-efficient and dynamically adjust their output to the actual load. This reduces energy consumption while at the same time enhancing operational reliability.

All Rittal chillers can be supplied with the requisite international certifications and are therefore suitable for flexible, global use. This makes them the ideal choice for challenging applications in energy, charging and storage technology.

Talk to us – together we can help shape the energy infrastructure of the future.



Find out more about temperature solutions for the energy infrastructure:

www.rittal.com/battery-storage

Climate control



Climate control type	Fans, filter fans, air/air heat exchangers	Cooling units, thermoelectric coolers	
	Ambient air cooling units are exceptionally cost-effective at dissipating heat loads, provided the ambient air is relatively clean and at a temperature below the required enclosure internal temperature.	Cooling units keep the enclosure internal temperature at a constant level, which is independent of the ambient temperature. The air routing is designed to meet individual requirements. Two separate circuits prevent the ingress of dust into the enclosure.	
Air throughput, unimpeded airflow m ³ /h	20 – 1,160	–	
Specific thermal output W/K	17.5 – 90	–	
Total cooling output W	–	80 – 5,500	
Continuous thermal output W	–	–	
Product characteristics	The latest generation of Blue e+ filter fans are impressively simple to maintain and available in AC/DC, EC and EMC variants. Filter fans with EC technology, in particular, boast IoT capabilities that deliver significant time and cost benefits.	The Rittal Blue e+ series is the world's most efficient cooling unit. With heat pipe technology as standard and speed-controlled components, average energy savings of 75% are achievable.	



	Air/water heat exchangers, chillers	Enclosure heaters	Climate control accessories
	Efficient liquid cooling may be used in all situations requiring a high cooling load, such as process and machine cooling or for dissipating heat loss from enclosures using air/water heat exchangers. Liquid cooling allows you to achieve spatial separation between cooling production and process cooling.	Condensation poses a particular risk for control electronics, especially with outdoor siting. A range of output categories ensures that the correct thermal output is always available.	Perfectly coordinated components allow you to customise climate control to your specific requirements, whether you need targeted air routing, precise control of the equipment or appropriate consumables.
	-	-	-
	300 – 50,000	-	-
	-	10 – 800	-
	Energy savings of up to 70% can be achieved with the Blue e+ generation of chillers. They ensure efficient cooling of liquid media with exceptional control accuracy, thanks to innovative DC inverter technology.	The innovative profile geometry ensures even heat distribution inside the enclosure and prevents cold spots. The tool-free push-in connection technology ensures a much faster wiring process.	Our innovative range of accessories additionally enhances the efficiency and reliability of climate control components with monitoring, control and individual air routing.



EU F-gas Regulation (EU) 2024/573 – Convert your cooling units and chillers before the deadline

The **EU F-gas Regulation (EU) 2024/573** came into force on **11 March 2024**, and introduced significantly stricter regulations on the use of fluorinated greenhouse gases (F-gases). As from 2027, only cooling units and chillers (below 12 kW) with a **GWP < 150** will be allowed to be sold in the EU.

Rittal was quick to respond and is converting its Generation Blue e+ cooling units and chillers completely to refrigerant **R-1234yf** (GWP 0.5) well ahead of the ban which comes into force in 2027.

Available Rittal products with R-1234yf:

- Blue e+ cooling units 1.5 – 5.5 kW
- Blue e+ S cooling units 0.3 – 1.0 kW
- Blue e+ chillers 1.5 – 7.0 kW

Your benefits:

- **Legally compliant – Now and in the future:**
R-1234yf meets the required GWP value of < 150 and is therefore fully F-gas compliant from 2027 – with no need for derogations
- **Easily integrated:**
Blue e+ S and Blue e+ cooling units with R-1234yf have identical dimensions, mounting cut-outs and connection positions to their predecessors, and are therefore readily interchangeable on a 1:1 basis
- **Planning confidence without price increases:**
Conversion to R-1234yf is entirely price-neutral



Find out more about
switching refrigerants:

www.rittal.com/F-Gas

Check your F-gas compliance with RiTherm

RiTherm automatically checks whether the selected cooling unit meets the current and future requirements to reduce fluorinated greenhouse gases, for both the European and US markets.

The F-gas check shows the following at a glance:

- GWP (Global Warming Potential) value of the refrigerant used
- Regulatory assessment under the EU F-gas Regulation and the US AIM Act
- Clear recommendations on what to do if a refrigerant is no longer admissible



RiTherm

Project: **New project** Company: DTPoland
Calculation: **New calculation** Contact person: n/a
Area: **Indoor** Contact information: n/a

State of compliance with F-gas regulations

Identification of product and refrigerant

Product line:	Blue e+ 5 cooling unit
Model reference:	5K 3478.800
Quantity:	1
Refrigerant type:	R-1234yf
Filling weight:	0,16 kg
Global Warming Potential (GWP):	631
CO2 equivalent (CO2e):	0,5 t
Possibility to refill:	Yes

Status of compliance

The selected device is equipped with the refrigerant R513A which ensures environmental and regulatory compliance. Current sustainability and efficiency objectives are met.

- ✓ Compliant acc. F-Gas Regulation (EU) 2024/573
- ✓ Compliant acc. US AIM Act of 2020

Friedhelm Loh Group XXX
XXXXXXXX

Safety of refrigerant

R-1234yf is classified as **A2L** (low toxicity, flame-resistant) under international standards. Rittal has undertaken a detailed safety evaluation plus additional independent testing, which concluded that **R-1234yf is safe for industrial use**, provided equipment is designed in accordance with the relevant standards – which is, of course, guaranteed with Rittal.

- Standard- and approval-compliant: Rittal equipment satisfies all key safety standards such as IEC/EN 60335-2-40 and UL 60335-2-40
- No additional safety measures required: With minimal fill volumes and a safety-led design, Rittal devices are below the required limits

Derogations

If the safety requirements at the point of use prohibit the use of R-1234yf, the Regulation provides for derogations permitting the use of refrigerants with a GWP of up to 750.

For cases where this derogation applies, Rittal continues to offer units with refrigerant R-513A (GWP 631).

Availability:

Blue e+ and Blue e+ S cooling units: Off-the-shelf
Blue e+ chillers: From June 2026



Good reasons to use refrigerant R-1234yf

R-1234yf – The ultimate refrigerant solution

R-1234yf covers all key requirements: Maximum safety, sustainable environmental compatibility and technical reliability. As a globally established standard for modern vehicle air-conditioning systems, this refrigerant is a leader in its field, and its performance is also well-documented in other sectors. In the Japanese market, R-1234yf has been used successfully in enclosure cooling for many years. Japanese companies rate its stable performance, optimised thermodynamics and future-proof design.

R-1234yf 
– The smart choice
for **efficient, reliable,**
eco-conscious cooling.



Find out more about
switching refrigerants:

www.rittal.com/F-Gas

Additions to our chiller portfolio

Versatile for sure

Blue e+ chillers from Rittal are high-performance, energy-efficient solutions for demanding cooling applications in industrial manufacturing, outdoor applications such as battery energy storage solutions (BESS), and IT infrastructure in small and medium-sized data centres.



Blue e+ chillers

- Precise cooling from 1.5 to 7 kW
- Up to 70% energy savings are achievable with speed-regulated components and inverter technology
- Internationally approved and suitable for global use, thanks to their multi-voltage capability



Blue e+ outdoor chillers

- Cooling outputs of 4, 5.5 and 7 kW
- Weatherproof thanks to an aluminium enclosure with a UV-resistant paint finish
- Can be used down to -20 °C
- Integral heater to preset the temperature of the cooling medium



Blue e+ Hybrid IT chillers

- Cooling outputs of 5 and 6.7 kW
- Ideal for small-scale IT applications up to 30 kW
- Component-friendly hybrid cooling – integral free cooler for energy savings of up to 90%
- Particularly efficient when sited outdoors, where a high Delta T can be achieved during winter months



Find out more about
Blue e+ chillers:

www.rittal.com/bluepluschiller

Blue e+ Dynamic cooling units



Cooling units for maritime and dynamic applications

This series of cooling units has been designed for use in dynamic applications. Tested to DNV-CG-0339, they are particularly ideal for use on board ships (e.g. enclosures in engine rooms). Their exceptionally stable mechanical design makes these cooling units suitable for any application that causes high vibration loads on the device, for example in ports (cranes), logistics (storage and retrieval systems) and airports (baggage handling systems).

Availability: Off-the-shelf



Find out more about
Blue e+ Dynamic:

www.rittal.com/dynamic

LCP Rear Door CW



The LCP Rear Door CW is the perfect solution for dissipating heat from IT racks efficiently. Thanks to the modular concept consisting of a passive, active and water module, heat can be dissipated out of the server room directly from the rack, via the medium of water.

Your benefits:

- Extensive use of indirect “free cooling” thanks to the design of the heat exchanger, with a water inlet temperature of 15 °C
- Low installation depth (180 mm) with an output class of up to 30 kW
- Direct mounting on VX IT and TS IT racks (no adaptor frame needed)
- Can be used independently of existing climate control systems and flexibly extended by adding modules

Availability: Available

Direct Liquid Cooling (DLC)



Modular platform solutions

The Rittal Direct Liquid Cooling portfolio is available as:

- A water-based CDU in-rack solution (up to 150 kW) and CDU in-row solution (1 MW at 4K ATD) for data centres with very high power densities
- Modular pipework concept from the CDU through to bespoke manifolds in the rack

Benefits:

- Modular concept
- Redundant pump units, filters, controllers, sensors and fail-safe mode for pumps
- Leak monitoring on an individual component basis
- Sensors and controllers can be replaced during active operation
- Pumps and filters in the CDU in-row solution can be replaced during active operation
- Power supply via DC busbar

Availability: Available



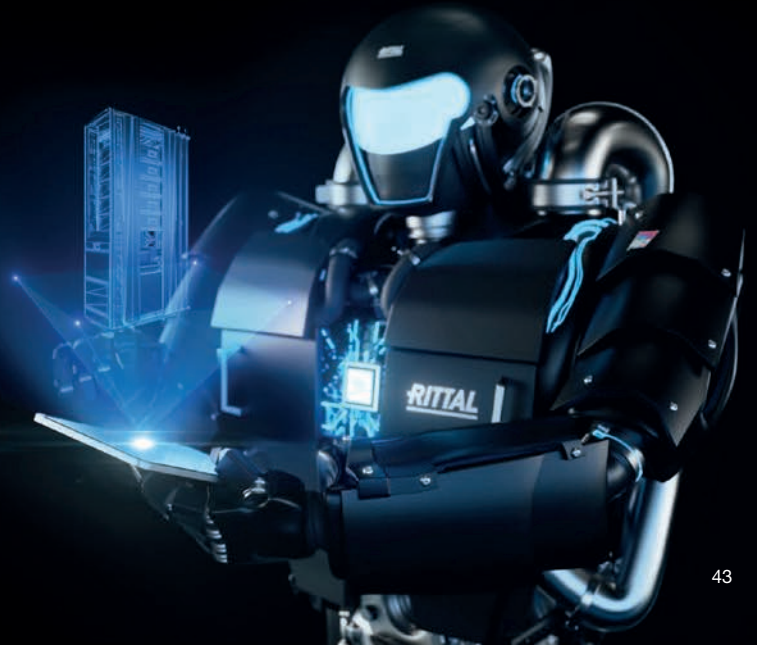
Find out more about
Direct Liquid Cooling:

www.rittal.com/dlc

RiDLC – Calculation and configuration software

All the functions at a glance

- Calculation of required thermal (cooling) capacity
- 3D configuration for IT equipment, rack and cooling
- Documentation



IT Infrastructure



IT segment	IT enclosure systems/racks	IT power	
	<p>The VX IT is the solution for all network and server applications, whether a network distributor or server racks in an edge, colocation or hyperscale data centre. It is the ideal platform for all requirements in modern IT infrastructures.</p>	<p>Put your faith in innovative IT power concepts for energy distribution and backup to meet all your redundancy, scalability and availability requirements.</p>	
<p>Product variants</p>	<p>Whether you have a network infrastructure, edge applications or data centre, with Rittal IT racks and enclosures you can be sure that your IT is secure, flexible and future-proof at all times, from production environments through to state-of-the-art colocation data centres.</p>	<p>From the simple socket strip, to interconnected Power Distribution Units (PDU), through to comprehensive planning (including low-voltage distribution centre, UPS and RPP Remote Power Panel), you can depend on a reliable power supply. Our power distribution solutions for IT racks cover all application areas:</p> <ul style="list-style-type: none"> - Power distribution: Socket strips, PDU basic, PSM - Power distribution and measurement: PDU metered and retrofittable solution Inline Meter PDU - Power distribution, measurement and switching: PDU switched and PDU managed 	
<p>Product characteristics</p>	<p>Rittal IT racks are available in heights ranging from 15 to 52 U and a load capacity of up to 18,000 N. Additionally, wall-mounted enclosures offer compact, space-saving solutions in smaller networks or edge environments.</p>	<p>Optimum integration of the rack PDUs by mounting in the zero U space and professional monitoring by linking to standard DCIM software (such as RiZone). For optimum management of the power supply inside the rack. The output spectrum of our PDUs ranges from 3.7 kW to 22 kW.</p>	



	IT cooling	IT monitoring	IT security solutions	Modular data centre solutions
	Climate control concepts from Rittal cover the full spectrum of applications, from cooling a single rack through to entire data centres. Security plus optimum energy and cost efficiency are paramount.	Today's IT landscape would be unthinkable without monitoring. It has become firmly established as a permanent feature of IT security, allowing modern IT infrastructures to be operated securely.	As well as security rooms, Level E Micro Data Centers provide optimum protection against potential physical threats. Modularity and extendibility offer exceptional flexibility while also protecting your investment.	Rittal offers predefined MDC bundle solutions for up to four IT racks and various climate control options. There are also preconfigured RiMatrix data centre solutions for modules with more than four racks.
	Demand-based cooling provides the basis for optimum energy efficiency in data centres, thanks to 45 units with cooling outputs ranging from 3 to 481 kW.	More than 15 different sensors (including temperature, leak and access sensors) and upgrades ensure 360° monitoring of your entire IT infrastructure. Rittal's handle solution allows you to monitor access to the racks. Automatic emergency ventilation enables automatic door opening in the event of an alarm.	A flexible modular system allows you to configure a solution tailored to your requirements, for both security rooms and Level E Micro Data Centers.	The predefined RiMatrix Data Center modules can each cover up to 400 kW, allowing several modules in a data centre to be combined.
	Integral climate control concepts for rack, suite and room climate control help to minimise operating costs and ensure energy-efficient operation over a period of many years.	The CMC III monitoring system can accommodate up to 32 sensors per system and has an integral CAN bus for simple wiring. The access management system provides the ultimate in security using 2-factor authentication and the four-eyes principle.	Protection from fire, flue gases, water and dust, as well as unauthorised access. Power supply, cooling, monitoring, fire alarm and extinguisher systems round out this security cover into a complete data centre.	The predefined solutions can be customised to ensure maximum flexibility and customer benefits with minimum planning outlay.

AX IT Nano Data Center

The space-saving solution for IT infrastructure

The AX IT Nano Data Center is the ideal small data centre for those seeking a space-saving solution for integrating network and IT infrastructure into their production facility for direct processing of large data volumes. Thanks to the new 19" swing mounting frame, servers or switches can be integrated vertically.



- High protection category (up to IP 54):
Based on the AX industry standard and ideally suited to use in industrial environments
- Climate control: Ventilation via filter fans from our range of accessories ensures reliable climate control for the IT components
- Optimum cable routing and installation: Straightforward handling and cable routing thanks to the integrated swing frame
- Maximum flexibility: Can be used as a wall-mounted or free-standing enclosure in combination with the Rittal AX compact enclosure modular system

Availability: June 2026



Find out more about the AX IT Nano Data Center:

www.rittal.com/AXITNanoDC

19" cable bridge

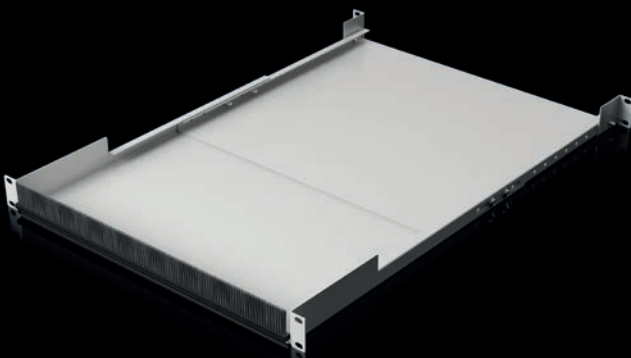
Tidy cable routing made easy

Rittal now offers the ideal solution for structured, protected cable routing between the front and rear mounting levels in IT racks – the new 19" cable bridge. It is particularly useful when switches are installed at the rear and the patch level at the front, keeping your cabling clearly organised and secure. Thanks to its depth-variable design, the cable bridge adapts flexibly to different distances between levels and is also easy to retrofit in existing installations.

Benefits at a glance:

- Optimised cable routing between the front and rear
- Flexible adaptation to different installation depths and distances between levels
- Simple retrofitting, with cable routing directly in the 19" level
- Open at the top so the compartment can be expanded
- Flexible sealing at the front using a brush strip to maintain effective climate control

Availability: Off-the-shelf



Find out more about the 19" cable bridge:

www.rittal.com/cable-bridge

Sensors and control units

These new sensors deliver enhanced safety and security with guaranteed long-term availability. They are also compatible with the smart PDUs from Rittal!

- Extended range of functions: Access management sensors are equipped with vibration detection for monitoring the IT infrastructure
- Contemporary design in black to match the CMC X PU – for a uniform look in the IT rack
- Backwards compatible with all Rittal embedded devices (CMC III/PDUs/loT interface)



Find out more about sensors:

www.rittal.com/sensors

Wide range of sensors

Availability: Off-the-shelf

Temperature sensor



Temperature/humidity sensor



Access monitoring sensor



Leak point sensor



Leak sensor, for bayed enclosure suites



Access control



Availability: August 2026

Airflow sensor



Universal sensor



Smoke detector



Differential pressure sensor



I/O unit



ADO Control Unit



VX IT system support extension kit

Mounting surfaces exactly where you need them

Make the most of unused space above your IT racks and turn it into valuable extra installation space – with the VX IT system support extension kit from Rittal. Whether you use it for smart cable management, reliable power distribution, high-performance cooling technology or dependable security systems – the extension kit opens up new possibilities for making your IT infrastructure even more structured and efficient.

Benefits at a glance:

- Flexible expansion – add components and equipment at any time
- Extra space without the need for conversion – make the most of the area above the racks
- Quick installation – simply screw onto the existing system support
- Future-proof – compatible with the modular system



Availability: Off-the-shelf



Find out more about the VX IT system support extension kit:

www.rittal.com/extension-kit

Tool-free blanking panel, 1 U

Quick assembly and efficient protection

The tool-free blanking panel from Rittal enables you to seal off unused space in your IT rack in no time at all – with no need for any kind of tool. Ideal for rack expansions that are partially configured or designed to grow along with your requirements, it creates a tidy and professional impression, while also improving air routing in the rack.



Benefits at a glance:

- Flexible solution for sealing off unused rack space and openings in the 19" mounting standard – on air baffle plates or cable ducts, for instance
- Reliable thermal management
- Enhanced energy efficiency thanks to targeted air routing
- Tool-free assembly – simply clip into place
- Flexible combining of various panels, including with the 3 U variant

Availability: Off-the-shelf



Find out more about the tool-free blanking panel, 1 U:

www.rittal.com/blanking-panel

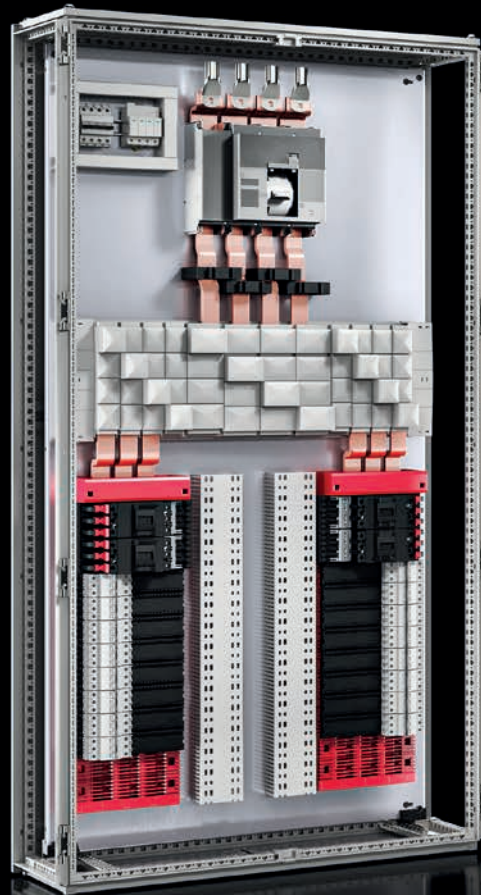
Remote Power Panel

The Remote Power Panel (RPP) is a compact power distribution unit based on RiLineX, which has been specially developed for use in data centres and other critical infrastructures. It is used to distribute power from a central source to multiple outlets, offering intelligent monitoring, flexibility and safety.

Benefits at a glance

- RPPs support modular and scalable power distribution for growing infrastructure requirements
- Monitoring and management of current, voltage and energy consumption support proactive energy management
- Integral circuit-breakers and fuses boost safety and reduce sources of error
- Seamless integration into redundant power supply systems to ensure uninterrupted operation in business-critical environments
- Scalable up to 1.2 MW thanks to a certified modular configuration

Availability: On request



Custom power solutions for OCP racks

Open. Efficient. Scalable. – that’s what your IT infrastructure will be if you use the Rittal OCP ORV3 without busbar.

The Open Compute Project (OCP) brings together leading companies with the goal of making open IT infrastructures more efficient, scalable and sustainable. Rittal is supporting this vision with its OCP-compliant Open Rack Version 3 (ORV3), which is now also available without an integral busbar.

This innovative rack system enables you to customise your power supply and ensures maximum flexibility when planning your infrastructure. Select your ideal busbar – from 18 kW to 80 kW – and configure your system to suit your specific requirements.

- Flexible busbar selection – to suit the rack power density
- Can be retrofitted without replacing the entire system
- Modular design for AI/HPC applications
- Hot-pluggable components in the rack simplify maintenance work
- An appropriate Direct Liquid Cooling solution can be added
- Quick integration thanks to integral castor modules, air baffle plates and levelling feet
- Accessories include IT and power rails, a 19" adaptor, doors and side panels

Availability: Off-the-shelf



Find out more about OCP ORV3:

www.rittal.com/OCP-ORV3



OCP busbars to suit your requirements

Benefit from complete control of your OCP ORV3 rack's power supply. Choose from a number of different busbar output classes and adapt your system flexibly to your requirements – without any need to replace the entire rack.

- Choice of two busbar output classes – 18 and 33 kW
- Upgradable – can be extended on a modular basis for all data centre applications
- Centralised power shelf design for better power pack utilisation
- 48 V DC busbars for efficient power distribution and minimal losses

Availability: Q3 2026



PDU with IEC C13/C19 combination sockets

The new PDUs with combination sockets take flexibility and efficiency to a whole new level: One socket combining IEC C13 and IEC C19 will help future-proof your infrastructure and significantly reduce the number of variants required. The result? Streamlined planning and fast, clean commissioning with optimum cable routing.

- Maximum flexibility – One socket combining IEC C13 and IEC C19, perfect for dynamic IT environments
- Future-proof – Minimal replacements needed when switching hardware
- Streamlined planning – Fewer PDU variants, clear selection
- PDU metered, switched and managed are all available with the new combination sockets
- The new PDUs are supplied as before with ambient monitoring and outputs ranging from 3.7 kW to 22 kW

Availability: June 2026



Find out more about our PDU with IEC C13/C19 combination sockets:

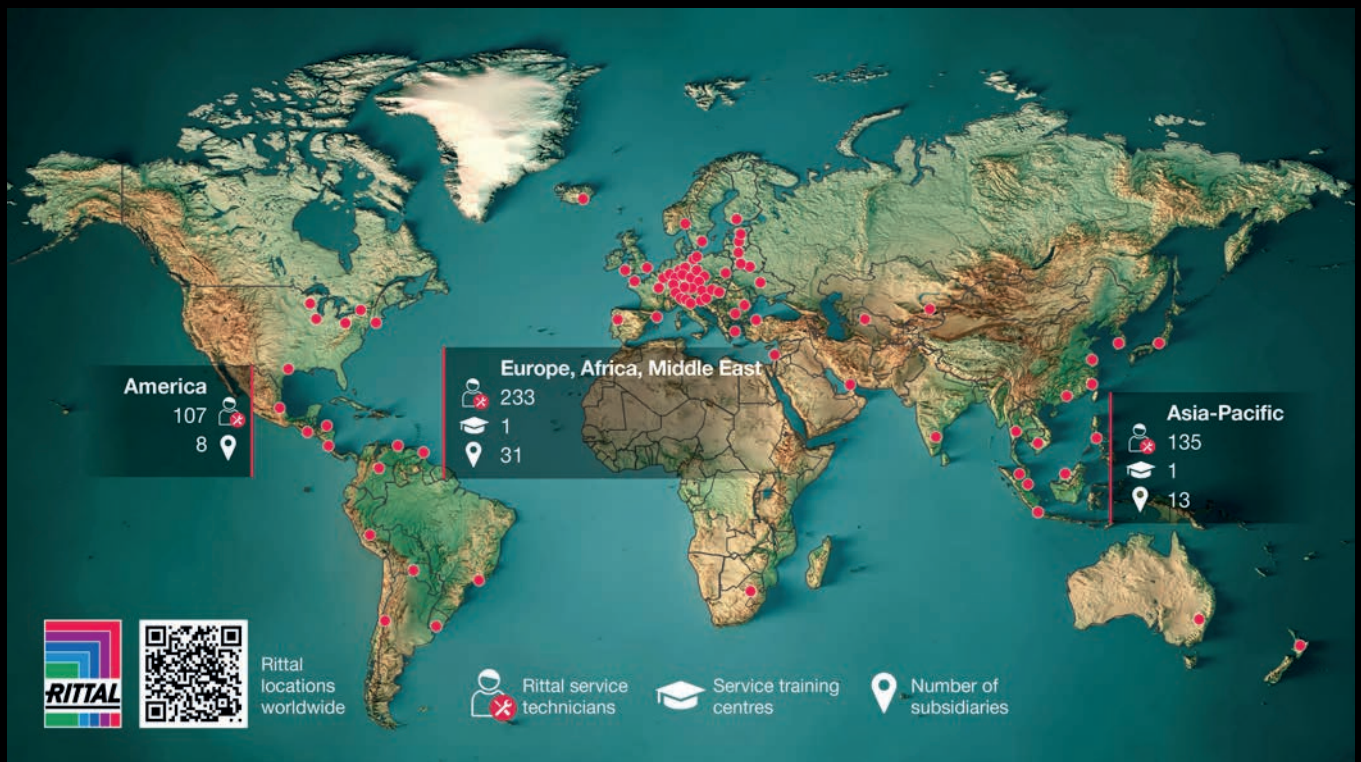
www.rittal.com/pdu

Overview of our services

Sustainability and energy efficiency are among the biggest challenges facing industrial companies today. This requires careful analysis of every aspect, from small pieces of equipment through to large-scale production machines.

The demands on plant availability are increasing, as the pressure on costs and resources continues to rise. Now more than ever, it is vital to continuously modernise and maintain your production equipment and keep it in optimum condition. The Rittal service team is on hand to support you with a comprehensive range of one-stop services, short response times, and qualified service engineers offering in-depth product and system knowledge.

Global service network



Wherever your plant or system is located, we are on hand to assist.

Our global service network means you can rely on consistent quality. Our local experts always support you, whether by providing quick, straightforward assistance over our service hotline to help resolve minor issues or travelling to you to carry out repairs, conduct regular maintenance or replace equipment.

- All from a single source
- Manufacturer expertise
- Always nearby



Find out more about Rittal Services:

www.rittal.com/services



Original spare parts

Do you want to find the spare part you need quickly and reliably? No problem! It couldn't be simpler, thanks to the high availability of our spare parts – we have more than 2,000 different products that you can order with ease through our online shop.

- Optimum spare parts availability ensures rapid fault resolution
- Original spare parts from the manufacturer
- Simple and convenient search via the spare parts finder and the Rittal Scan & Service app

Service agreements

Would you like to be able to plan your maintenance and costs? The design of Rittal service agreements gives you the flexibility to tailor the scope of our services to your requirements and to choose from various service packages.

- Minimum downtime thanks to guaranteed response times
- Plannable service budget
- Peace of mind in daily operations

Rittal efficiency advice

Taking stock

Determining the current state of affairs on site



Calculation

+ Energy saving
+ CO₂ reduction
+ Amortisation period



Modernisation projects

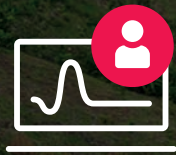
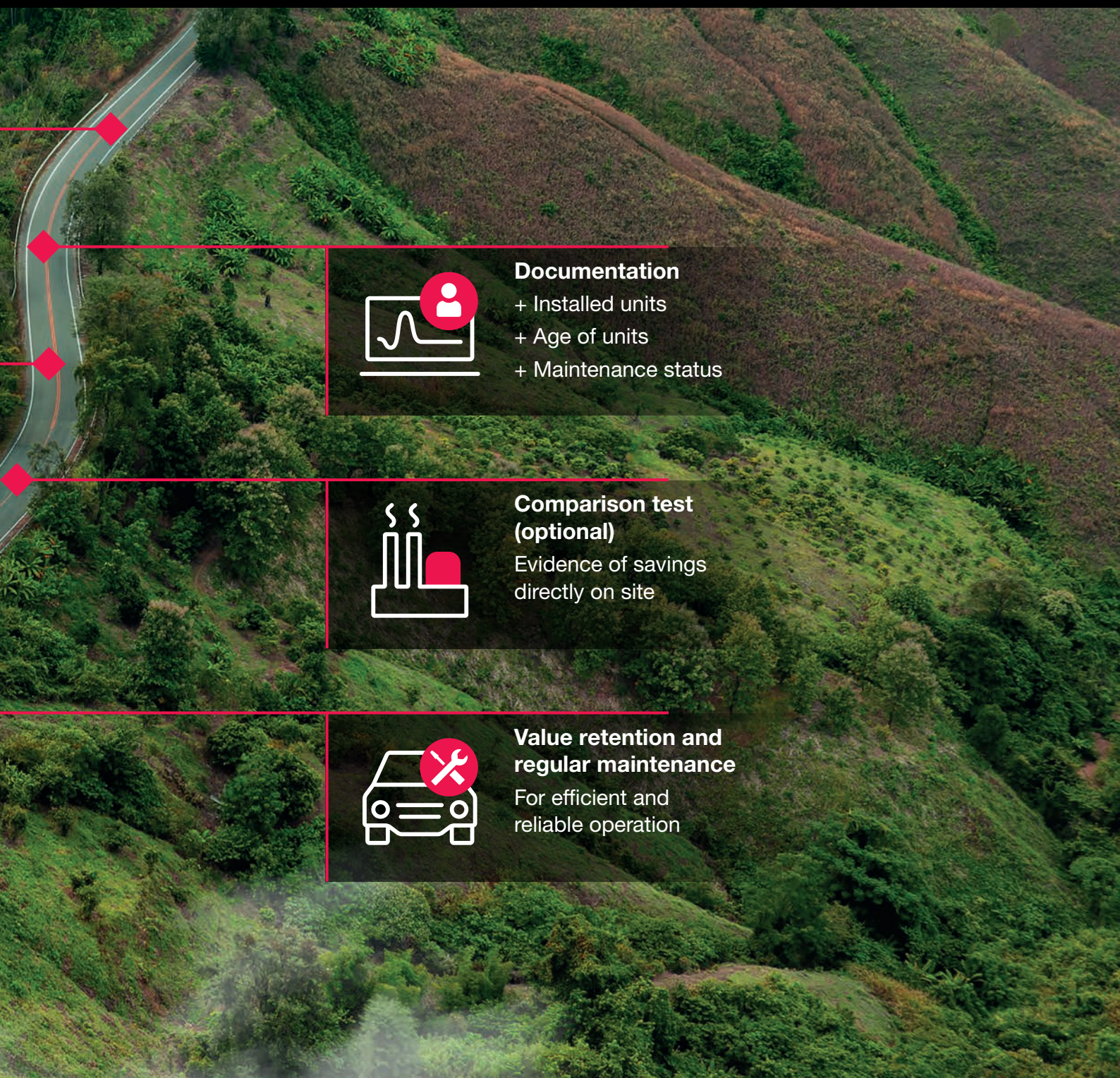
+ Uninstalling old units
+ Installing new units
+ Disposing of old units



Efficiency and service check

Is your cooling unit still efficient and up-to-date? Let us check it for you with the Rittal efficiency and service check! We capture data on site and check the general condition and service status of your equipment. By carrying out energy analyses, we show you how much you can save – for the sake of the environment and your budget.

- Overview of the current status of your equipment
- Illustration of energy consumption and costs as well as potential savings
- Specific and detailed programmes and initiatives for energy audits to ISO 50001



Documentation

- + Installed units
- + Age of units
- + Maintenance status



Comparison test (optional)

Evidence of savings directly on site



Value retention and regular maintenance

For efficient and reliable operation



Find out more about
Rittal efficiency advice:

www.rittal.com/Efficiency-analyses

Ordering table – Innovations 2026

AX wall-mounted enclosure, 3-part



Model No.	Dimensions mm (W / H / D)	Page
2260630	600 / 345 / 373	22
2260640	600 / 345 / 473	22
2260930	600 / 478 / 373	22
2260940	600 / 478 / 473	22
2260950	600 / 478 / 573	22
2260960	600 / 478 / 673	22
2261230	600 / 612 / 373	22
2261240	600 / 612 / 473	22
2261540	600 / 746 / 473	22
2261550	600 / 746 / 573	22
2261560	600 / 746 / 673	22
2262130	600 / 1,012 / 373	22
2262140	600 / 1,012 / 473	22
2262150	600 / 1,012 / 573	22
2262160	600 / 1,012 / 673	22
2260955	600 / 478 / 573	22
2260965	600 / 478 / 673	22
2261555	600 / 746 / 573	22
2261565	600 / 746 / 673	22
2262155	600 / 1,012 / 573	22
2262165	600 / 1,012 / 673	22

AX compact enclosure, sheet steel



Model No.	Dimensions mm (W / H / D)	Page
1094000	800 / 400 / 250	22
1095000	800 / 400 / 300	22
1112000	1,200 / 400 / 300	22
1096000	1,000 / 600 / 300	22
1113000	1,200 / 600 / 300	22

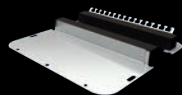
CS Toptec, bayable



Model No.	Dimensions mm (W / H / D)	Page
9781666	600 / 1,600 / 600	23
9781686	600 / 1,800 / 600	23
9781818	800 / 1,200 / 800	23
9781828	800 / 2,000 / 800	23
9781866	800 / 1,600 / 800	23
9781868	800 / 1,600 / 800	23
9781888	800 / 1,800 / 800	23
9782818	800 / 1,200 / 800*	23
9782828	800 / 2,000 / 800**	23
9782866	800 / 1,600 / 600*	23
9782868	800 / 1,600 / 800*	23
9782888	800 / 1,800 / 800*	23
9783888	800 / 1,800 / 800**	23

* with cut-out for outdoor cooling unit 1.5 kW
 ** with cut-out for outdoor cooling unit 2 – 5 kW

Gland plate, two-part



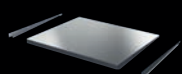
Model No.	Dimensions mm (W / D)	Page
2561450	256 / 149	24
2562450	339 / 149	24
2563450	447 / 149	24
2564450	534 / 149	24
2565450	301 / 221	24
2566450	401 / 221	24
2567450	436 / 221	24

AX stainless steel



Model No.	Dimensions mm (W / H / D)	Page
1364000	300 / 300 / 210	24
1365000	500 / 500 / 210	24
1366000	380 / 600 / 210	24
1367000	600 / 380 / 210	24
1368000	380 / 300 / 210	24
1369000	600 / 760 / 210	24
1370000	500 / 500 / 300	24
1371000	760 / 760 / 300	24
1372000	400 / 500 / 210	24
1373000	800 / 1,000 / 300	24
1374000	800 / 1,200 / 300	24
1375000	1,000 / 1,000 / 300	24

Protective roof for VX



Model No.	To fit W / D mm	Page
8604455	600 / 400	25
8605455	600 / 500	25
8608455	600 / 800	25
8686455	600 / 600	25
8806455	800 / 600	25
8608455	800 / 800	25

Protective roof for AX



Model No.	To fit W / D mm	Page
2361010	300 / 210	25
2362010	500 / 210	25
2363010	1,000 / 300	25
2364010	800 / 400	25
2365010	600 / 400	25
2366010	500 / 300	25
2472010	380 / 210	25
2473010	600 / 210	25
2474010	760 / 300	25
2475010	800 / 300	25
2476010	600 / 350	25

Ordering table – Innovations 2026

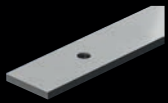
RiLineX fuse holders



Model No.	Primary current / class / Dimensions mm (W x H x D)	Page
9364002	30 A / Class CC / 18 x 263 x 123.5	30
9364004	30 A / Class CC / 27 x 263 x 123.5	30
9364010	30 A / Class J / 106 x 195 x 105	30
9364110	60 A / Class J / 106 x 195 x 105	30
9364210	100 A / Class J / 106 x 195 x 105	30
9364310	200 A / Class J / 182 x 298 x 117	30
9364410	400 A / Class J / 209 x 299 x 135	30

Tin-plated copper bars

Busbar, slotted, tin-plated



Model No.	Dimensions mm (W x H), length mm	Page
9685004	50 x 10, 385	31
9685006	50 x 10, 585	31
9685008	50 x 10, 785	31
9685010	50 x 10, 985	31
9685012	50 x 10, 1,185	31

PE/PEN busbar, tin-plated



Model No.	Dimensions mm (W x H), length mm	Page
9685524	30 x 5, 300	31
9685526	30 x 5, 500	31
9685528	30 x 5, 700	31
9685520	30 x 5, 900	31
9685522	30 x 5, 1,100	31
9685534	30 x 10, 300	31
9685536	30 x 10, 500	31
9685538	30 x 10, 700	31
9685530	30 x 10, 900	31
9685532	30 x 10, 1,100	31
9685544	40 x 10, 300	31
9685546	40 x 10, 500	31
9685548	40 x 10, 700	31
9685540	40 x 10, 900	31
9685542	40 x 10, 1,100	31
9685584	80 x 10, 300	31
9685586	80 x 10, 500	31
9685588	80 x 10, 700	31
9685580	80 x 10, 900	31
9685582	80 x 10, 1,100	31

Longitudinal connector, tin-plated



Model No.	Dimensions mm (W x H), length mm	Page
9685200	60 x 10, 195	31
9685210	35 x 10, 195	31
9685250	100 x 10, 195	31
9685260	55 x 10, 195	31

Busbar, tin-plated



Model No.	Dimensions mm (W x H), length mm	Page
3584205	30 x 5, 2,400	31
3586205	30 x 10, 2,400	31
9685870	40 x 10, 2,400	31
9685895	60 x 10, 2,400	31
9685905	80 x 10, 2,400	31
9685915	100 x 10, 2,400	31
9685920	120 x 10, 2,400	31

Tin-plated copper bars

Laminated copper bars, tin-plated



Model No.	Dimensions mm (W x H), length mm	Page
9685725	10 x 24, 2,000	31
9685745	10 x 32, 2,000	31
9685785	10 x 50, 2,000	31

Current transformers



Model No.	Primary current To fit busbars mm	Page
9393550	100 A 30 x 15, 20 x 20	31
9393552	200 A 30 x 15, 20 x 20	31
9393553	300 A 30 x 15, 20 x 20	31
9393554	400 A 40 x 12, 2x 30 x 10	31
9393555	400 A 40 x 40, 2x 50 x 10	31
9393557	630 A 50 x 12, 2x 40 x 10	31
9393558	630 A 60 x 15, 40 x 40, 2x 50 x 10	31
9393560	630 A 80 x 15, 2x 60 x 10, 3x 50 x 10	31
9393561	800 A 60 x 15, 40 x 40, 2x 50 x 10	31
9393562	800 A 60 x 40	31
9393563	1,000 A 60 x 15, 40 x 40, 2x 50 x 10	31
9393564	1,000 A 60 x 40, 50 x 50	31
9393565	1,250 A 60 x 40, 50 x 50	31
9393566	1,250 A 80 x 15, 2x 60 x 10, 3x 50 x 10	31
9393567	1,250 A 60 x 60, 2x 80 x 10	31
9393568	1,600 A 60 x 60, 2x 80 x 10	31
9393570	2,000 A 60 x 60, 2x 80 x 10	31
9393571	2,000 A 2x 100 x 10, 80 x 60, 50 x 80	31
9393572	2,500 A 80 x 60, 50 x 80, 2x 100 x 10	31
9393573	2,500 A 3x 100 x 10	31

Ordering table – Innovations 2026

VX ESS energy storage enclosure



without interior fit-out

Model No.	Dimensions mm (W / H / D)	Page
9690020	600 / 2,000 / 600	34
9690021	600 / 2,000 / 800	34
9690023	800 / 2,000 / 800	34

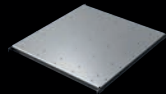


with interior fit-out

Model No.	Dimensions mm (W / H / D)	Page
9690040	600 / 2,000 / 600	34
9690041	600 / 2,000 / 800	34
9690043	800 / 2,000 / 800	34

Accessories

VX ESS component shelf, heavy duty



Model No.	To fit W / D mm	Page
9692020	600 / 600	34
9692021	600 / 800	34
9692023	800 / 800	34

VX ESS energy storage frame



Model No.	Dimensions mm (W / H / D)	Page
9690030	600 / 2,000 / 600	34
9690031	600 / 2,000 / 800	34
9690033	800 / 2,000 / 800	34

Accessories

VX ESS slide rail



Model No.	To fit D mm	Page
9692050	600	34
9692051	800	34

Accessories for VX and CS Toptec

VX ESS mounting angles



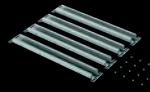
Model No.	To fit H mm	Page
9692180	1,800	34
9692200	2,000	34

Mounting bracket



Model No.	Page
9692005	34

VX ESS cross-member



Model No.	W/D mm	Page
9692060	600	34
9692080	800	34

Blue e+ wall-mounted cooling units with refrigerant R-1234yf



Model No.	Version	Output class	Page
3478800	Sheet steel	300 W	40
3478801		300 W	40
3479800		500 W	40
3479801		500 W	40
3480800		750 W	40
3484800		1,000 W	40
3484840		1,000 W	40
3485830		1,500 W	40
3486930		2,000 W	40
3487930		2,500 W	40
3488940	Chemical industry design	4,000 W	40
3489940		6,000 W	40
3485835		1,500 W	40
3486935		2,000 W	40
3487935		2,500 W	40
3488945	Dynamic	4,000 W	40
3489945		5,000 W	40
3484837		1,000 W	40
3485837		1,500 W	40
3486937	2,000 W	40	
3487937	2,500 W	40	
3412810	IT bundle	2,500 W	40



Model No.	Version	Output class	Page
3485530	Stainless steel	1,500 W	40
3486630		2,000 W	40
3487630		2,500 W	40
3488640		4,000 W	40
3489640		6,000 W	40



Model No.	Version	Output class	Page
3485330	Outdoor	1,500 W	40
3486330		2,000 W	40
3487330		2,500 W	40
3488340		4,000 W	40
3489340		5,000 W	40

Blue e+ roof-mounted cooling units



Model No.	Version	Output class	Page
3485730		1,300 W	40
3412800	IT bundle	1,600 W	40

Blue e+ chillers



Model No.	Version	Output class	Page
3419100	Standard	1,500 W	41
3420200		2,500 W	41
3434300		4,000 W	41
3434400		5,500 W	41
3434450		7,000 W	41
3434360	Outdoor	4,000 W	41
3434460		5,500 W	41
3434470		7,000 W	41
3434440	Hybrid IT	5,000 W	41
3434480		6,700 W	41

Ordering table – Innovations 2026

LCP Rear Door CW



Model No.	Design	Page
3314615	Passive module, 15 kW 600 x 2,000 mm (W x H)	42
3314630	Passive module, 30 kW 600 x 2,000 mm (W x H)	42
3314625	Passive module, 15 kW 600 x 2,200 mm (W x H)	42
3314650	Passive module, 30 kW 600 x 2,200 mm (W x H)	42
3314815	Passive module, 15 kW 800 x 2,000 mm (W x H)	42
3314830	Passive module, 30 kW 800 x 2,000 mm (W x H)	42
3314825	Passive module, 15 kW 800 x 2,200 mm (W x H)	42
3314850	Passive module, 30 kW 800 x 2,200 mm (W x H)	42
3314635	Water module	42
3314020	Active module, 2,000 mm (H)	42
3314025	Active module, 2,200 mm (H)	42

Direct Liquid Cooling (DLC)



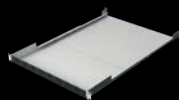
Model No.	Design	Page
3343200	CDU In-Row, 1 MW at 4K ATD	43
3343230	CDU In-Rack, 150 kW at 6K ATD	43

AX IT Nano Data Center



Model No.	Dimensions mm (W / H / D)	Page
7647400	600 / 800 / 400	46
7648400	600 / 1,000 / 400	46

19" cable bridge



Model No.	Distance between levels	Page
5302042	500 - 750 mm	46

Sensors and control units



Model No.	Design	Page
7010020	I/O unit	47
7010110	Temperature	47
7010120	Temperature/humidity	47
7010140	Airflow	47
7010150	Differential pressure	47
7010160	Access monitoring	47
7010190	Universal	47
7010200	Smoke detector	47
7010210	Leak point	47
7010220	Leak, for bayed enclosure suites	47
7010501	ADO Control Unit	47

VX IT system support extension kit



Model No.	For enclosure type VX, VX IT, TS, TS IT, TX	Page
5502137	Depth: 1,000 / 1,200 mm	48

Tool-free blanking panel, 1 U (19")



Model No.	RAL	Page
5302200	9005	48

OCP ORV3 rack



Model No.	Open frame	Page
7100110	without busbar	50
7100120	with busbar	50

OCP busbars



Model No.	Output class	Page
7100810	18 kW	51
7100820	33 kW	51

PDU with IEC C13/C19 combination sockets



Model No.	Output class	Page
7979220	metered	51
7979221	metered	51
7979245	metered	51
7979246	metered	51
7979320	switched	51
7979321	switched	51
7979345	switched	51
7979346	switched	51
7979420	managed	51
7979421	managed	51
7979445	managed	51
7979446	managed	51

Rittal – The System.

Faster – better – everywhere.



Your contact details for all Rittal companies worldwide.

www.rittal.com/contact



EPLAN

efficient engineering.



Your Eplan contact.

www.eplan-software.com/contact



Missed the trade fair? Never mind.

Whether you're interested in Eplan software solutions, RAS automation solutions or the RiLineX shock-hazard-protected 60 mm system platform for power distribution, we've put together a brief summary of our trade fair highlights.



Simply scan the QR code and enjoy the film once the trade fair has ended. Happy watching!

www.rittal.com/Highlights-HM26

