



# Plugs and sockets for industrial use





## The Company

**I.L.M.E. SpA - INDUSTRIA LOMBARDA MATERIALE ELETTRICO** - has been operating in Milan since 1938, in particular in the electrotechnical sector for the manufacturing of equipment for industrial installations.

ILME reflects the traditional entrepreneurial spirit of Lombardy, and has enjoyed continuous expansion for over half a century.

The company has carved an important role for itself in the main world markets, also operating directly in the countries that have assumed world leadership in the field of automation, including Germany and Japan.

In the electrical connection sector with applications in industrial automation, characterised by top performance and utmost reliability needs, ILME is today the acknowledged partner of many leading companies worldwide.

The company's fundamental values are: product innovation, original solutions, excellent price-quality ratio, a customer-oriented sense of service, ethical behaviour and an environmentally-friendly approach.



To promote the continuing improvement of its qualitative results, ILME has always encouraged its collaborators to work with utmost responsibility and participation.

The company focuses on a series of benefits to the user, including research into the most suitable materials, high quality and safe cabling, a rapid turnaround and readily available services.



ISO 9001 certification: 2015  
Design, manufacture and distribution  
of industrial electrical equipment (IAF 19)  
Certificate No. 50 100 11133

## CE marking

As from 1<sup>st</sup> January 1997, in order to launch electrical products on the European market the manufacturer must ensure these bear the relevant CE marking, in line with the Low Voltage Directive 73/23/EEC\* (implemented in Italy as L.D. 18-10-1977 no. 791) and its modification 93/68/EEC\* (implemented in Italy as L.D. 25-11-1996 no. 626/96, published in the supplement to the Gazzetta Ufficiale of 14-12-1996). The CE marking must be visible on the product or, if this is not possible, on the packaging, the instructions for use or on the warranty certificate. It acts as a declaration by the manufacturer that the product complies with all relevant EU directives regarding its field of application.

### ILME products bear the CE marking on the actual product or its packaging.

Almost all ILME products fall within the scope of the Low Voltage Directive. A declaration of conformity is required in order to be able to apply the CE marking. This declaration, to which the market is not directly entitled, must be made available to the controlling authorities (in Italy, the Ministry for Industry, Commerce and Handicraft) at all times. In it, the manufacturer declares the technical safety standard(s) followed in the manufacture of the product. These standards must be, in decreasing order of preference:

- a European standard (EN prefix)
- a European harmonisation document (HD prefix)
- an international IEC standard
- a national standard
- in the absence of reference standards, the manufacturer's internal specifications guaranteeing compliance with the basic safety requirements of the directive.

Compliance with harmonised technical standards (i.e. ratified by CENELEC) also constitutes presumption of compliance with the basic safety requirements of the directives.

The CE marking of ILME products results from the declaration of conformity of the product to harmonised standards or international IEC standards.

Through the CE marking, ILME declares full compliance, not merely with the directive's basic safety requirements, but also with those international or national EU standards on which voluntary safety certification markings are based (e.g. IMQ and VDE). In this way, ILME intends to give the CE marking the value of self-certification in terms of safety, given the loss in legal value of voluntary certifications issued by third parties, ratified by directive 93/68/EEC\*.

Notwithstanding the above, practically all ILME products still bear voluntary conformity markings.

**The above mentioned EU declaration of conformity becomes null and void when the assembly of products includes one or more components not manufactured by ILME and without CE marking.**

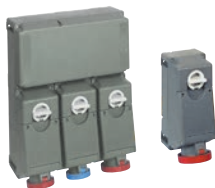
**\*Note:** The next legal reference for the Low Voltage Directive was 2006/95/EC, as consolidation of the original Directive 73/23/EEC + Directive 93/68/EEC.

On 29<sup>th</sup> March 2014, the Official Journal of the European Union published the new Low Voltage directive 2014/35/EU dd. 26<sup>th</sup> February 2014, a recast version of directive 2006/95/EC, which is in force since on 20<sup>th</sup> April 2016.

The information contained in this catalogue is not binding and may be changed without notice.

**TM Series**

3 - 9



- IP66/IP67 degree of protection
- mechanical resistance: IK10
- insulating enclosure, robust construction
- 16A, 32A, 63A, 125A models
- installation: wall / flush mount
- cable entry: top, bottom or rear
- bottom plug entry
- versions: without fuses; with fuses; with room for modular unit; with 24V transformer

**TM PI Series**

7



- IP44 and IP66/IP67 degree of protection
- mechanical resistance: IK10
- insulating enclosure, robust construction
- 16A, 32A
- installation: wall / flush mount
- cable entry: top, bottom or rear
- plug entry 15° angled
- standard PLUSO sockets

**TM Ex Series**

8



- IP66/IP67 degree of protection
- mechanical resistance: IK10
- insulating enclosure, robust construction
- 16A, 32A, 63A models
- installation: wall mount
- cable entry: top or rear
- bottom plug entry
- versions: without fuses; with fuses

**IB6 Series and FC Complements**

10 - 12



- IP66 degree of protection
- mechanical resistance: IK10
- insulating enclosure
- 16A, 32A, 63A models
- installation: single wall mount; with FC series
- cable entry: top
- bottom plug entry
- versions: without fuses; with fuses; with transformer

**PB5 Series - Die-cast aluminium alloy**

13



- IP55 degree of protection
- mechanical resistance: IK10
- die-cast aluminium alloy enclosure
- 16A, 32A, 63A, 125A models
- installation: wall mount
- cable entry: top or rear
- bottom plug entry
- versions: without fuses; with fuses; with 24V transformer

**SQV/FM Series**

14 - 15



- IP44/IP55 degree of protection
- mechanical resistance: 6 J
- insulating enclosure
- 16A, 32A models
- installation: wall / flush mount
- cable entry: top or rear
- plug entry 15° angled
- versions: without fuses; with fuses; with 24V transformer

**BK Series**

16



- IP66/IP67 degree of protection
- mechanical resistance: IK10
- UL 94V-0 insulating enclosure
- 16A, 32A, 63A models
- installation: wall / flush mount
- cable entry: top, bottom or rear
- plug entry: front
- versions: without fuses; with fuses; with 24V transformer

**QC/QM Series**

18 - 19



- IP65 and IP55 degree of protection
- mechanical resistance: IK08
- insulating enclosure, robust construction
- 16A, 32A, 63A, Schuko® model
- can be joined and stacked
- assembled version supplied with: power supply plug, sockets outlets, safety device

**pluso**

**Plugs - Low voltage over 50V up to 690V**



<b>Wall-mounting</b> - IP44 (16A, 32A) - IP67 (16A, 32A, 63A, 125A)	<b>20</b>
<b>Flush-mounting</b> - IP44 (16A, 32A) - IP67 (16A, 32A, 63A, 125A)	<b>20</b>
<b>Angled</b> - IP44 (16A, 32A) - IP67 (16A, 32A)	<b>20</b>
<b>Plugs</b> - IP44 (16A, 32A) - IP66/IP67 (16A, 32A) - IP67 (63A, 125A)	<b>21</b>

**Socket-outlets and Couplers - Low voltage over 50V up to 690V**



<b>Wall-mounting sockets</b> - IP44 (16A, 32A) - IP67 (16A, 32A, 63A, 125A)	<b>22</b>
<b>Straight flush-mounting sockets</b> - IP44 (16A, 32A) - IP67 (16A, 32A, 63A, 125A)	<b>22</b>
<b>Inclined flush-mounting sockets</b> - IP44 (16A, 32A) - IP67 (16A, 32A, 63A, 125A)	<b>22</b>
<b>Couplers</b> - IP44 (16A, 32A) - IP66/IP67 (16A, 32A) - IP67 (63A, 125A)	<b>23</b>

**Phase Inverters - Low voltage over 200V up to 415V**



<b>Wall-mounting plugs</b> - IP44 (16A, 32A) - IP67 (16A, 32A, 63A, 125A)	<b>24</b>
<b>Flush-mounting plugs</b> - IP44 (16A, 32A) - IP67 (16A, 32A, 63A, 125A)	<b>24</b>
<b>Plugs</b> - IP44 (16A, 32A) - IP66/IP67 (16A, 32A) - IP67 (63A, 125A)	<b>24</b>

**LS-TYPE connection for entertainment**



<b>Plugs</b> - IP44 (16A, 32A)	<b>25</b>
<b>Couplers</b> - IP44 (16A, 32A)	<b>25</b>
<b>Straight flush-mounting sockets</b> - IP44 (16A, 32A)	<b>25</b>
<b>Inclined flush-mounting sockets</b> - IP44 (16A, 32A)	<b>25</b>

**Ex Plugs - Low voltage from 50V to 690V**



<b>Plugs</b> - IP66/IP67 (16A, 32A, 63A)	<b>25</b>
--	-----------

**Flush-mounting sockets - Low voltage over 50V up to 690V**



<b>Straight flush-mounting sockets</b> - IP44 (16A, 32A) - IP67 (16A, 32A)	<b>26</b>
<b>Inclined flush-mounting sockets</b> - IP44 (16A, 32A) - IP67 (16A, 32A)	<b>26</b>

**Extra low voltage up to 50V**



<b>Wall-mounting sockets</b> - IP44 (16A, 32A)	<b>28</b>
<b>Flush-mounting sockets</b> - IP44 (16A, 32A)	<b>28</b>
<b>Couplers</b> - IP44 (16A, 32A)	<b>28</b>
<b>Flush-mounting sockets with microswitch</b> - IP44 (16A, 32A)	<b>28</b>
<b>Plugs</b> - IP44 (16A, 32A)	<b>28</b>
<b>Wall-mounting plugs</b> - IP44 (16A, 32A)	<b>28</b>

**Socket-outlets with safety transformer**



<b>29</b>
-----------

**TM...IH**

wall-mounting (with single box)



A	P	● 110V	● 230V	● 400V
125	3	TM 12543 IH	TM 12563 IH	TM 12593 IH
125	4	TM 12544 IH	TM 12594 IH	TM 12564 IH
125	5	TM 12545 IH	TM 12595 IH	TM 12565 IH

**125A ●**  
with fuse carrier type NH 00

**TM...SP**

wall-mounting (with single box)



A	P	● 110V	● 230V	● 400V
125	3	TM 12543 SP	TM 12563 SP	TM 12593 SP
125	4	TM 12544 SP	TM 12594 SP	TM 12564 SP
125	5	TM 12545 SP	TM 12595 SP	TM 12565 SP

**125A ●**  
with direct connection

**TM...IA**

wall-mounting (with single box)



A	P	● 110V	● 230V	● 400V
63	3	TM 6343 IA	TM 6363 IA	TM 6393 IA
63	4	TM 6344 IA	TM 6394 IA	TM 6364 IA
63	5	TM 6345 IA	TM 6395 IA	TM 6365 IA
125	3	TM 12543 IA	TM 12563 IA	TM 12593 IA
125	4	TM 12544 IA	TM 12594 IA	TM 12564 IA
125	5	TM 12545 IA	TM 12595 IA	TM 12565 IA

**63A/125A ●**  
with automatic circuit-breaker  
and electrical interlock

**TM...IAD**

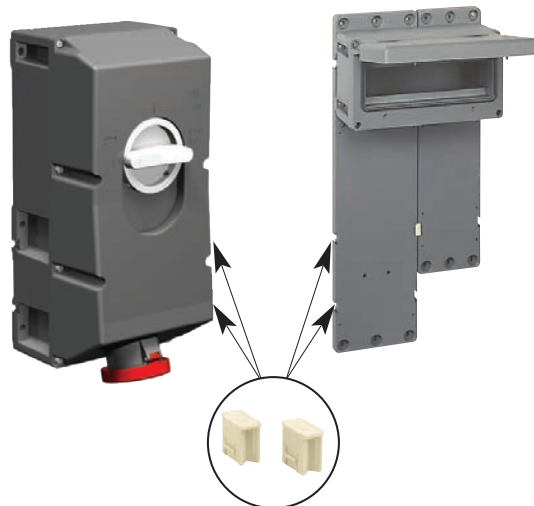
wall-mounting (with single box)



A	P	● 110V	● 230V	● 400V
63	3	TM 6343 IAD	TM 6363 IAD	TM 6393 IAD
63	4	TM 6344 IAD	TM 6394 IAD	TM 6364 IAD
63	5	TM 6345 IAD	TM 6395 IAD	TM 6365 IAD
125	3	TM 12543 IAD	TM 12563 IAD	TM 12593 IAD
125	4	TM 12544 IAD	TM 12594 IAD	TM 12564 IAD
125	5	TM 12545 IAD	TM 12595 IAD	TM 12565 IAD

**63A/125A ●**  
with residual current operated  
circuit-breaker and electrical  
interlock

**Socket-outlets combinations**





**TM...SIS/KSIS** without base box



A	P	● 110V	● 230V	● 400V
16	3	TM 1643 SIS	TM 1663 SIS	TM 1693 SIS
16	4	TM 1644 SIS	TM 1694 SIS	TM 1664 SIS
16	5	TM 1645 SIS	TM 1695 SIS	TM 1665 SIS
32	3	TM 3243KSIS	TM 3263KSIS	TM 3293KSIS
32	4	TM 3244KSIS	TM 3294KSIS	TM 3264KSIS
32	5	TM 3245KSIS	TM 3295KSIS	TM 3265KSIS

**16A/32A** ■  
with cylindrical fuses

**TM...SIS** without base box



A	P	● 110V	● 230V	● 400V
32	3	TM 3243 SIS	TM 3263 SIS	TM 3293 SIS
32	4	TM 3244 SIS	TM 3294 SIS	TM 3264 SIS
32	5	TM 3245 SIS	TM 3295 SIS	TM 3265 SIS
63	3	TM 6343 SIS	TM 6363 SIS	TM 6393 SIS
63	4	TM 6344 SIS	TM 6394 SIS	TM 6364 SIS
63	5	TM 6345 SIS	TM 6395 SIS	TM 6365 SIS

**32A/63A** ■  
with cylindrical fuses

**TM...SIR/KSIR** without base box



A	P	● 110V	● 230V	● 400V
16	3	TM 1643 SIR	TM 1663 SIR	TM 1693 SIR
16	4	TM 1644 SIR	TM 1694 SIR	TM 1664 SIR
16	5	TM 1645 SIR	TM 1695 SIR	TM 1665 SIR
32	3	TM 3243KSIR	TM 3263KSIR	TM 3293KSIR
32	4	TM 3244KSIR	TM 3294KSIR	TM 3264KSIR
32	5	TM 3245KSIR	TM 3295KSIR	TM 3265KSIR

**16A/32A** ■  
with room for modular equipment  
(rail for 4,5 modules)

**TM...SIR** without base box



A	P	● 110V	● 230V	● 400V
32	3	TM 3243 SIR	TM 3263 SIR	TM 3293 SIR
32	4	TM 3244 SIR	TM 3294 SIR	TM 3264 SIR
32	5	TM 3245 SIR	TM 3295 SIR	TM 3265 SIR
63	3	TM 6343 SIR	TM 6363 SIR	TM 6393 SIR
63	4	TM 6344 SIR	TM 6394 SIR	TM 6364 SIR
63	5	TM 6345 SIR	TM 6395 SIR	TM 6365 SIR

**32A/63A** ■  
with room for modular equipment  
(rail for 6 modules)

**TM...SSP/KSSP** without base box



A	P	● 110V	● 230V	● 400V
16	3	TM 1643 SSP	TM 1663 SSP	TM 1693 SSP
16	4	TM 1644 SSP	TM 1694 SSP	TM 1664 SSP
16	5	TM 1645 SSP	TM 1695 SSP	TM 1665 SSP
32	3	TM 3243KSSP	TM 3263KSSP	TM 3293KSSP
32	4	TM 3244KSSP	TM 3294KSSP	TM 3264KSSP
32	5	TM 3245KSSP	TM 3295KSSP	TM 3265KSSP

**16A/32A** ■  
with direct connection

**TM...SSP** without base box



A	P	● 110V	● 230V	● 400V
32	3	TM 3243 SSP	TM 3263 SSP	TM 3293 SSP
32	4	TM 3244 SSP	TM 3294 SSP	TM 3264 SSP
32	5	TM 3245 SSP	TM 3295 SSP	TM 3265 SSP
63	3	TM 6343 SSP	TM 6363 SSP	TM 6393 SSP
63	4	TM 6344 SSP	TM 6394 SSP	TM 6364 SSP
63	5	TM 6345 SSP	TM 6395 SSP	TM 6365 SSP

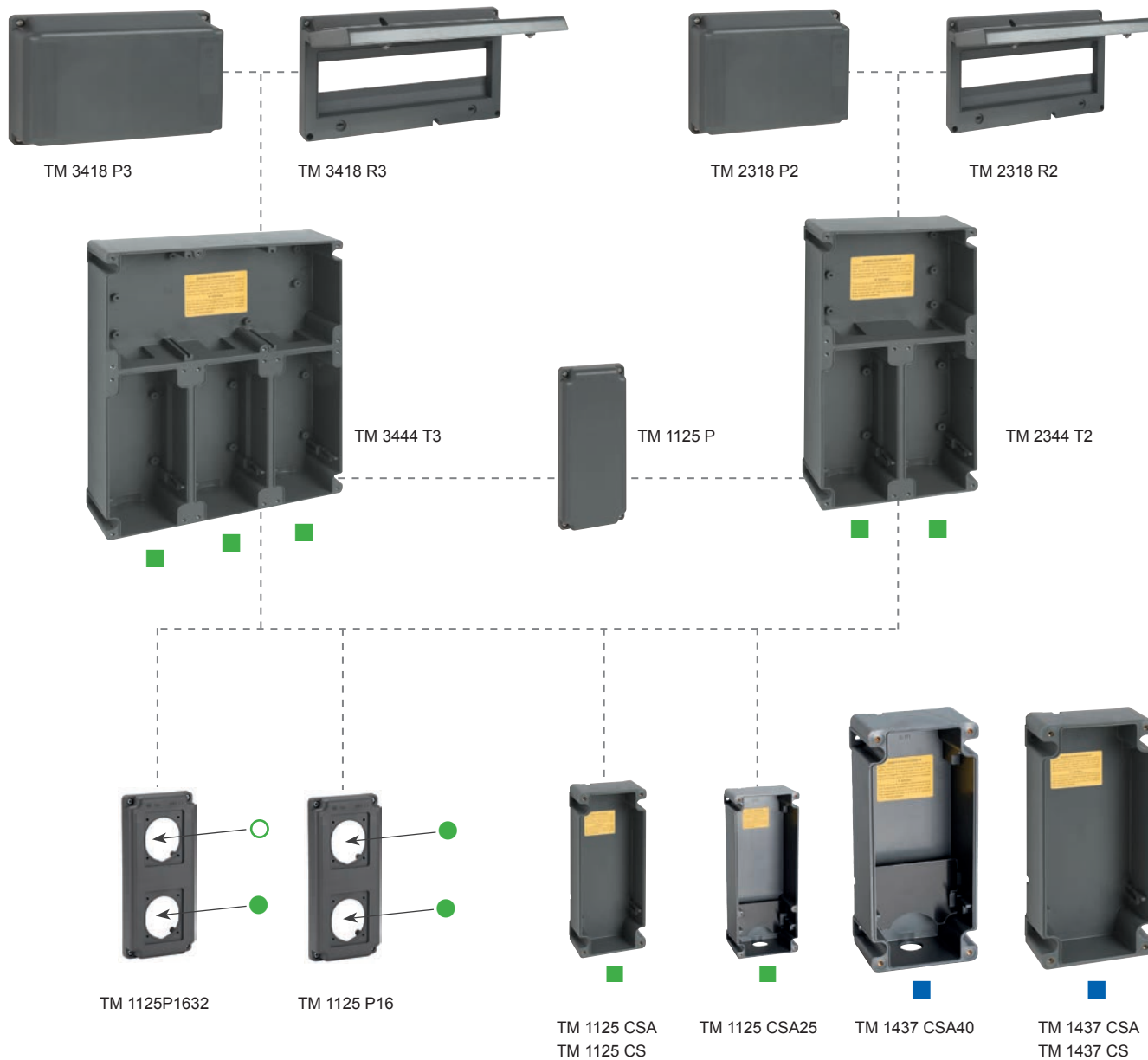
**32A/63A** ■  
with direct connection

**TM...ST1** without base box



A	P	● 24V
16	2	TM 16220 ST1

**16A** ■  
with transformer



CSA= bottom entry

**pluso** INCLINED FLUSH-MOUNTING SOCKETS



A	P	● 110V	● 230V	● 400V	
16	3	PEW 1643 PI	PEW 1663 PI	PEW 1693 PI	●
16	4	PEW 1644 PI	PEW 1694 PI	PEW 1664 PI	●
16	5	PEW 1645 PI	PEW 1695 PI	PEW 1665 PI	○
32	3	PEW 3243 PI	PEW 3263 PI	PEW 3293 PI	○
32	4	PEW 3244 PI	PEW 3294 PI	PEW 3264 PI	○
32	5	PEW 3245 PI	PEW 3295 PI	PEW 3265 PI	○

**IP67**  
PEW...PI  
screw connection



A	P	● 110V	● 230V	● 400V	
16	3	PE 1643 PI	PE 1663 PI	PE 1693 PI	●
16	4	PE 1644 PI	PE 1694 PI	PE 1664 PI	●
16	5	PE 1645 PI	PE 1695 PI	PE 1665 PI	○
32	3	PE 3243 PI	PE 3263 PI	PE 3293 PI	○
32	4	PE 3244 PI	PE 3294 PI	PE 3264 PI	○
32	5	PE 3245 PI	PE 3295 PI	PE 3265 PI	○

**IP44**  
PE...PI  
screw connection

**TM...IS/KIS**

wall-mounting (with single box)



A	P	● 110V	● 230V	● 400V
16	3	TM 1643 IS	TM 1663 IS	TM 1693 IS
16	4	TM 1644 IS	TM 1694 IS	TM 1664 IS
16	5	TM 1645 IS	TM 1695 IS	TM 1665 IS
32	3	TM 3243KIS	TM 3263KIS	TM 3293KIS
32	4	TM 3244KIS	TM 3294KIS	TM 3264KIS
32	5	TM 3245KIS	TM 3295KIS	TM 3265KIS

**16A/32A ●**  
with cylindrical fuses

**TM...IS**

wall-mounting (with single box)



A	P	● 110V	● 230V	● 400V
32	3	TM 3243 IS	TM 3263 IS	TM 3293 IS
32	4	TM 3244 IS	TM 3294 IS	TM 3264 IS
32	5	TM 3245 IS	TM 3295 IS	TM 3265 IS
63	3	TM 6343 IS	TM 6363 IS	TM 6393 IS
63	4	TM 6344 IS	TM 6394 IS	TM 6364 IS
63	5	TM 6345 IS	TM 6395 IS	TM 6365 IS

**32A/63A ●**  
with cylindrical fuses

**TM...IR/KIR**

wall-mounting (with single box)



A	P	● 110V	● 230V	● 400V
16	3	TM 1643 IR	TM 1663 IR	TM 1693 IR
16	4	TM 1644 IR	TM 1694 IR	TM 1664 IR
16	5	TM 1645 IR	TM 1695 IR	TM 1665 IR
32	3	TM 3243KIR	TM 3263KIR	TM 3293KIR
32	4	TM 3244KIR	TM 3294KIR	TM 3264KIR
32	5	TM 3245KIR	TM 3295KIR	TM 3265KIR

**16A/32A ●**  
with room for modular equipment  
(rail for 4,5 modules)

**TM...IR**

wall-mounting (with single box)



A	P	● 110V	● 230V	● 400V
32	3	TM 3243 IR	TM 3263 IR	TM 3293 IR
32	4	TM 3244 IR	TM 3294 IR	TM 3264 IR
32	5	TM 3245 IR	TM 3295 IR	TM 3265 IR
63	3	TM 6343 IR	TM 6363 IR	TM 6393 IR
63	4	TM 6344 IR	TM 6394 IR	TM 6364 IR
63	5	TM 6345 IR	TM 6395 IR	TM 6365 IR

**32A/63A ●**  
with room for modular equipment  
(rail for 6 modules)

**TM...SP/KSP**

wall-mounting (with single box)



A	P	● 110V	● 230V	● 400V
16	3	TM 1643 SP	TM 1663 SP	TM 1693 SP
16	4	TM 1644 SP	TM 1694 SP	TM 1664 SP
16	5	TM 1645 SP	TM 1695 SP	TM 1665 SP
32	3	TM 3243KSP	TM 3263KSP	TM 3293KSP
32	4	TM 3244KSP	TM 3294KSP	TM 3264KSP
32	5	TM 3245KSP	TM 3295KSP	TM 3265KSP

**16A/32A ●**  
with direct connection

**TM...SP**

wall-mounting (with single box)



A	P	● 110V	● 230V	● 400V
32	3	TM 3243 SP	TM 3263 SP	TM 3293 SP
32	4	TM 3244 SP	TM 3294 SP	TM 3264 SP
32	5	TM 3245 SP	TM 3295 SP	TM 3265 SP
63	3	TM 6343 SP	TM 6363 SP	TM 6393 SP
63	4	TM 6344 SP	TM 6394 SP	TM 6364 SP
63	5	TM 6345 SP	TM 6395 SP	TM 6365 SP

**32A/63A ●**  
with direct connection

**TM...T1**

wall-mounting (with single box)



A	P	● 24V
16	2	TM 16220 T1

**16A ●**  
with transformer



TM 1414 DB



TM 2914 DB



TM 2614 DB



TM 2314 DB



TM 1114 DB



TM 1414 GB



TM 2914 GB



TM 2614 GB



TM 2314 GB



TM 1114 GB



TM 1456 TB



TM 1456 TB X 2



TM 1456TB + TM 1145 TB



TM 1145 TB x 2



TM 1145 TB



TM 2956 DT



TM 2656 DT



TM 2345 DT

**Fixing base**

● 255x114 mm

● 370x144 mm



TM...ISX

wall-mounting (with single box)



A	P	● 110V	● 230V	● 400V
16	3	TM 1643 ISX	TM 1663 ISX	TM 1693 ISX
16	4	TM 1644 ISX	TM 1694 ISX	TM 1664 ISX
16	5	TM 1645 ISX	TM 1695 ISX	TM 1665 ISX

16A ●  
with cylindrical  
fuses

II 3D - Ex tc IIIC T65 °C  
Dc IP66/IP67 X

TM...ISX

wall-mounting (with single box)



A	P	● 110V	● 230V	● 400V
32	3	TM 3243 ISX	TM 3263 ISX	TM 3293 ISX
32	4	TM 3244 ISX	TM 3294 ISX	TM 3264 ISX
32	5	TM 3245 ISX	TM 3295 ISX	TM 3265 ISX
63	3	TM 6343 ISX	TM 6363 ISX	TM 6393 ISX
63	4	TM 6344 ISX	TM 6394 ISX	TM 6364 ISX
63	5	TM 6345 ISX	TM 6395 ISX	TM 6365 ISX

32A/63A ●  
with cylindrical  
fuses

II 3D - Ex tc IIIC T65 °C  
Dc IP66/IP67 X

TM...SPX/KSPX

wall-mounting (with single box)



A	P	● 110V	● 230V	● 400V
16	3	TM 1643 SPX	TM 1663 SPX	TM 1693 SPX
16	4	TM 1644 SPX	TM 1694 SPX	TM 1664 SPX
16	5	TM 1645 SPX	TM 1695 SPX	TM 1665 SPX
32	3	TM 3243KSPX	TM 3263KSPX	TM 3293KSPX
32	4	TM 3244KSPX	TM 3294KSPX	TM 3264KSPX
32	5	TM 3245KSPX	TM 3295KSPX	TM 3265KSPX

16A/32A ●  
with direct  
connection

II 3D - Ex tc IIIC T65 °C  
Dc IP66/IP67 X

TM...SPX

wall-mounting (with single box)



A	P	● 110V	● 230V	● 400V
63	3	TM 6343 SPX	TM 6363 SPX	TM 6393 SPX
63	4	TM 6344 SPX	TM 6394 SPX	TM 6364 SPX
63	5	TM 6345 SPX	TM 6395 SPX	TM 6365 SPX

63A ●  
with direct  
connection

II 3D - Ex tc IIIC T65 °C  
Dc IP66/IP67 X

TM...SISX

without base box



A	P	● 110V	● 230V	● 400V
16	3	TM 1643 SISX	TM 1663 SISX	TM 1693 SISX
16	4	TM 1644 SISX	TM 1694 SISX	TM 1664 SISX
16	5	TM 1645 SISX	TM 1695 SISX	TM 1665 SISX

16A ■  
with fuse

II 3D - Ex tc IIIC T65 °C  
Dc IP66/IP67 X

TM...SSPX/KSPX without base box



A	P	● 110V	● 230V	● 400V
16	3	TM 1643 SSPX	TM 1663 SSPX	TM 1693 SSPX
16	4	TM 1644 SSPX	TM 1694 SSPX	TM 1664 SSPX
16	5	TM 1645 SSPX	TM 1695 SSPX	TM 1665 SSPX
32	3	TM 3243KSPX	TM 3263KSPX	TM 3293KSPX
32	4	TM 3244KSPX	TM 3294KSPX	TM 3264KSPX
32	5	TM 3245KSPX	TM 3295KSPX	TM 3265KSPX

16A/32A ■  
with direct  
connection

II 3D - Ex tc IIIC T65 °C  
Dc IP66/IP67 X



II 3GD - Ex nA IIC 65 °C  
(T6) Gc U X

TM 1414 DBX



TM 1456 TB

TM 2914 DBX



TM 1456 TB x2

TM 2614 DBX



TM 1456 TB + TM 1145 TB

TM 2314 DBX



TM 1145 TB x2

TM 1114 DBX



TM 1145 TB



II 3D - Ex tc IIIC T65 °C  
Dc IP66/IP67 U X



TM 3444 P3X



TM 2344 P2X



TM 1125 CSX



TM 1125 PX



**KI...IB6** wall-mounting



A	P	● 110V	● 230V	● 400V	
16	3	KI 1643 IB6	KI 1663 IB6	KI 1693 IB6	●
16	4	KI 1644 IB6	KI 1694 IB6	KI 1664 IB6	●
16	5	KI 1645 IB6	KI 1695 IB6	KI 1665 IB6	●
32	3	KI 3243 IB6	KI 3263 IB6	KI 3293 IB6	●
32	4	KI 3244 IB6	KI 3294 IB6	KI 3264 IB6	●
32	5	KI 3245 IB6	KI 3295 IB6	KI 3265 IB6	●
63	3	KI 6343 IB6	KI 6363 IB6	KI 6393 IB6	●
63	4	KI 6344 IB6	KI 6394 IB6	KI 6364 IB6	●
63	5	KI 6345 IB6	KI 6395 IB6	KI 6365 IB6	●

**IP66**  
**16A/32A** ●  
with fuse  
type 18x38

**IP66**  
**63A** ●  
with fuse  
type 22x58

**KI...EB6** wall-mounting



A	P	● 110V	● 230V	● 400V	
16	3	KI 1643 EB6	KI 1663 EB6	KI 1693 EB6	●
16	4	KI 1644 EB6	KI 1694 EB6	KI 1664 EB6	●
16	5	KI 1645 EB6	KI 1695 EB6	KI 1665 EB6	●
32	3	KI 3243 EB6	KI 3263 EB6	KI 3293 EB6	●
32	4	KI 3244 EB6	KI 3294 EB6	KI 3264 EB6	●
32	5	KI 3245 EB6	KI 3295 EB6	KI 3265 EB6	●
63	3	KI 6343 EB6	KI 6363 EB6	KI 6393 EB6	●
63	4	KI 6344 EB6	KI 6394 EB6	KI 6364 EB6	●
63	5	KI 6345 EB6	KI 6395 EB6	KI 6365 EB6	●

**IP66**  
**16A/32A** ●  
with direct  
connection

**IP66**  
**63A** ●  
with direct  
connection

**KI...RI5** wall-mounting



A	P	● 110V	● 230V	● 400V	
16	3	KI 1643 RI5	KI 1663 RI5	KI 1693 RI5	●
16	4	KI 1644 RI5	KI 1694 RI5	KI 1664 RI5	●
16	5	KI 1645 RI5	KI 1695 RI5	KI 1665 RI5	●
32	3	KI 3243 RI5	KI 3263 RI5	KI 3293 RI5	●
32	4	KI 3244 RI5	KI 3294 RI5	KI 3264 RI5	●
32	5	KI 3245 RI5	KI 3295 RI5	KI 3265 RI5	●
63	3	KI 6343 RI5	KI 6363 RI5	KI 6393 RI5	●
63	4	KI 6344 RI5	KI 6394 RI5	KI 6364 RI5	●
63	5	KI 6345 RI5	KI 6395 RI5	KI 6365 RI5	●

**IP55**  
**16A/32A** ●  
with room  
for modular equipment  
(rail for 7 modules)

**IP55**  
**63A** ●  
with room  
for modular equipment  
(rail for 7 modules)

**PK...EB** wall-mounting



A	P	● 110V	● 230V	● 400V	
16	3	PK 1643 EB	PK 1663 EB	PK 1693 EB	●
16	4	PK 1644 EB	PK 1694 EB	PK 1664 EB	●
16	5	PK 1645 EB	PK 1695 EB	PK 1665 EB	●
32	3	PK 3243 EB	PK 3263 EB	PK 3293 EB	●
32	4	PK 3244 EB	PK 3294 EB	PK 3264 EB	●
32	5	PK 3245 EB	PK 3295 EB	PK 3265 EB	●
63	3	PK 6343 EB	PK 6363 EB	PK 6393 EB	●
63	4	PK 6344 EB	PK 6394 EB	PK 6364 EB	●
63	5	PK 6345 EB	PK 6395 EB	PK 6365 EB	●

**IP44**  
**16A/32A** ●  
with direct  
connection

**IP44**  
**63A** ●  
with direct  
connection

**PB...T1/T2** wall-mounting



A	P	● 24V	
16	2	PB 16220 T1	●
16	2	PB 16220 T2	●

**IP44**  
**16A** ●  
with transformer



**IB6**  
**Tradition is renewed**

- IP66 degree of protection
- New plate for 2 socket-outlets
- More space for wiring
- New 63A version



FC 2957 DTS



FC 2957 DTM



FC 2957 DTL



FC 2957 DCS



FC 2957 DCM



FC 2957 DCL



FC 2241 DT



FC 2545 DT



FC 2853 DT



FC 2542 RAT



FC 2542 RA



FC 2525 MU

FC 1414 DB5



FC 2814 DB5



FC 2514 DB5



FC 2214 DB5



FC 1114 DB5



FC 1414 GB5



FC 2814 GB5



FC 2514 GB5



FC 2214 GB5



FC 1114 GB5



FC 1453 TB



FC 1453 TB x 2



FC 1141 TB



FC 1141 TB x 2



FC 1141 TB



**PK...PB5** metal enclosure sockets



A	P	● 110V	● 230V	● 400V
16	3	PK 1643 PB5	PK 1663 PB5	PK 1693 PB5
16	4	PK 1644 PB5	PK 1694 PB5	PK 1664 PB5
16	5	PK 1645 PB5	PK 1695 PB5	PK 1665 PB5
32	3	PK 3243 PB5	PK 3263 PB5	PK 3293 PB5
32	4	PK 3244 PB5	PK 3294 PB5	PK 3264 PB5
32	5	PK 3245 PB5	PK 3295 PB5	PK 3265 PB5
63	3	PK 6343 PB5	PK 6363 PB5	PK 6393 PB5
63	4	PK 6344 PB5	PK 6394 PB5	PK 6364 PB5
63	5	PK 6345 PB5	PK 6395 PB5	PK 6365 PB5

**IP55**  
**16A/32A/63A**  
 with fuse type E16 (16A)  
 with fuse type E33 (32A-63A)

**PK...PE5** metal enclosure sockets



A	P	● 110V	● 230V	● 400V
16	3	PK 1643 PE5	PK 1663 PE5	PK 1693 PE5
16	4	PK 1644 PE5	PK 1694 PE5	PK 1664 PE5
16	5	PK 1645 PE5	PK 1695 PE5	PK 1665 PE5
32	3	PK 3243 PE5	PK 3263 PE5	PK 3293 PE5
32	4	PK 3244 PE5	PK 3294 PE5	PK 3264 PE5
32	5	PK 3245 PE5	PK 3295 PE5	PK 3265 PE5
63	3	PK 6343 PE5	PK 6363 PE5	PK 6393 PE5
63	4	PK 6344 PE5	PK 6394 PE5	PK 6364 PE5
63	5	PK 6345 PE5	PK 6395 PE5	PK 6365 PE5

**IP55**  
**16A/32A/63A**  
 with direct connection

**PK...PB5** metal enclosure sockets



A	P	● 110V	● 230V	● 400V
125	3	PK 12543 PB5	PK 12563 PB5	PK 12593 PB5
125	4	PK 12544 PB5	PK 12594 PB5	PK 12564 PB5
125	5	PK 12545 PB5	PK 12595 PB5	PK 12565 PB5

**IP55**  
**125A**  
 with fuse type NH 00

**PK...PE5** metal enclosure sockets



A	P	● 110V	● 230V	● 400V
125	3	PK 12543 PE5	PK 12563 PE5	PK 12593 PE5
125	4	PK 12544 PE5	PK 12594 PE5	PK 12564 PE5
125	5	PK 12545 PE5	PK 12595 PE5	PK 12565 PE5

**IP55**  
**125A**  
 with direct connection

**PK...LL** metal enclosure sockets



A	P	● 110V	● 230V	● 400V
63	3	-	PK 6363 LL	-
63	4	-	-	PK 6364 LL
63	5	-	-	PK 6365 LL
125	3	-	PK 12563 LL	-
125	4	-	-	PK 12564 LL
125	5	-	-	PK 12565 LL

**IP55**  
**63A/125A**  
 with automatic circuit-breaker  
 and electrical interlock

**PB...A1/A2** metal enclosure sockets



A	P	● 24V
16	2	PB 16220 A1
16	2	PB 16220 A2

**IP44**  
**16A**  
 with transformer

**SQV** to be mounted in single or multiple boxes



A	P	● 110V	● 230V	● 400V
16	3	SQV 1643	SQV 1663	SQV 1693
16	4	SQV 1644	SQV 1694	SQV 1664
16	5	SQV 1645	SQV 1695	SQV 1665
32	3	SQV 3243	SQV 3263	SQV 3293
32	4	SQV 3244	SQV 3294	SQV 3264
32	5	SQV 3245	SQV 3295	SQV 3265

**IP44**  
**16A/32A ●**  
 with fuse type 10x38

**SQV** to be mounted in single or multiple boxes



A	P	● 110V	● 230V	● 400V
16	3	SQV 1643.5	SQV 1663.5	SQV 1693.5
16	4	SQV 1644.5	SQV 1694.5	SQV 1664.5
16	5	SQV 1645.5	SQV 1695.5	SQV 1665.5
32	3	SQV 3243.5	SQV 3263.5	SQV 3293.5
32	4	SQV 3244.5	SQV 3294.5	SQV 3264.5
32	5	SQV 3245.5	SQV 3295.5	SQV 3265.5

**IP55**  
**16A/32A ●**  
 with fuse type 10x38

**SQ** to be mounted in single or multiple boxes



A	P	● 110V	● 230V	● 400V
16	3	SQ 1643	SQ 1663	SQ 1693
16	4	SQ 1644	SQ 1694	SQ 1664
16	5	SQ 1645	SQ 1695	SQ 1665

**IP44**  
**16A ○**  
 with direct connection

**SQT** to be mounted in single or multiple boxes



A	P	● 24V
16	2	SQT 16220

**IP55**  
**16A ●**  
 with transformer

**SQE** to be mounted in single or multiple boxes



A	P	● 110V	● 230V	● 400V
16	3	SQE 1643	SQE 1663	SQE 1693
16	4	SQE 1644	SQE 1694	SQE 1664
16	5	SQE 1645	SQE 1695	SQE 1665
32	3	SQE 3243	SQE 3263	SQE 3293
32	4	SQE 3244	SQE 3294	SQE 3264
32	5	SQE 3245	SQE 3295	SQE 3265

**IP44**  
**16A/32A ●**  
 with direct connection

**SQE** to be mounted in single or multiple boxes



A	P	● 110V	● 230V	● 400V
16	3	SQE 1643.5	SQE 1663.5	SQE 1693.5
16	4	SQE 1644.5	SQE 1694.5	SQE 1664.5
16	5	SQE 1645.5	SQE 1695.5	SQE 1665.5
32	3	SQE 3243.5	SQE 3263.5	SQE 3293.5
32	4	SQE 3244.5	SQE 3294.5	SQE 3264.5
32	5	SQE 3245.5	SQE 3295.5	SQE 3265.5

**IP55**  
**16A/32A ●**  
 with direct connection



○



SQC 1114 CS



FM 3236 SQ



FM 2451 SQ



FM 3251 SQ



FM 4272 SQ



●



SQC 923 CS



FM 1043  
DSQV / SQV



FM 2451 DSQV / SQV



FM 3251 DSQV / SQV



FM 4272 SQV



FM 2525 SQV



FC 2542 QV/QVT



**BE** to be mounted in single or multiple boxes



A	P	● 110V	● 230V	● 400V
16	3	BE 1643	BE 1663	BE 1693
16	4	BE 1644	BE 1694	BE 1664
16	5	BE 1645	BE 1695	BE 1665
32	3	BE 3243	BE 3263	BE 3293
32	4	BE 3244	BE 3294	BE 3264
32	5	BE 3245	BE 3295	BE 3265

**16A/32A**  
with direct connection

**BK** to be mounted in single or multiple boxes



A	P	● 110V	● 230V	● 400V
16	3	BK 1643	BK 1663	BK 1693
16	4	BK 1644	BK 1694	BK 1664
16	5	BK 1645	BK 1695	BK 1665
32	3	BK 3243	BK 3263	BK 3293
32	4	BK 3244	BK 3294	BK 3264
32	5	BK 3245	BK 3295	BK 3265

**16A/32A**  
with fuse carrier type 10x38

**BPR** to be mounted in single or multiple boxes



A	P	● 110V	● 230V	● 400V
63	3	-	BPR 6363	-
63	4	-	-	BPR 6364
63	5	-	-	BPR 6365

**63A**  
cover with socket  
and window for modular

**BP** to be mounted in single or multiple boxes



A	P	● 110V	● 230V	● 400V
63	3	-	BP 6363	-
63	4	-	-	BP 6364
63	5	-	-	BP 6365

**63A**  
cover with socket

**BT** to be mounted in single or multiple boxes



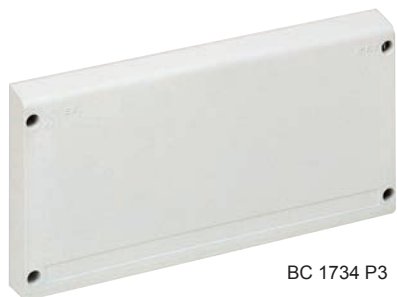
A	P	● 24V
16	2	BT 16220

**16A**  
with transformer

**BK Series**

- IP66/IP67 degree of protection
- mechanical resistance: IK 10
- UL 94V-0 insulating enclosure
- 16A, 32A, 63A models
- installation: wall / flush mount
- cable entry: top, bottom or rear
- plug entry: front
- versions: without fuses; with fuses; with transformer





BC 1734 P3



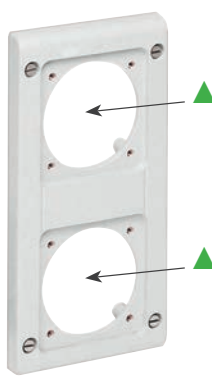
BC 1734 R3



BC 1123 P



BC 1123 Q



BC 1123 Q2



BC 1123 R



BC 1123 RQ



BC 4034 T3



BC 1123 CS

▲ PE/PEW...PQF/PQ

**Straight-flush  
mounting sockets**  
- see page 26

QC with TM sockets series with fuse holder



	magneto-thermal main switch with differential protection	maximum withdrawable active power values	wall plug 400V, 3P + N + $\underline{\underline{PE}}$ , 6h	n. socket-outlets	TM 1663 IT 16A, 250V, 2P + $\underline{\underline{PE}}$ , 6h	TM 1164 IT 16A, 400V, 3P + $\underline{\underline{PE}}$ , 6h	TM 1665 IT 16A, 400V, 3P + N + $\underline{\underline{PE}}$ , 6h	TM 3264 IT 16A, 400V, 3P + $\underline{\underline{PE}}$ , 6h	TM 3265 IT 16A, 400V, 3P + N + $\underline{\underline{PE}}$ , 6h	TM 16220 16A, 24V, 2P, s.r.
	A	kW	A		●	●	●	●	●	●
QP TI A	63	35	63	5	2	2		1		
QP TI A-1	63	35	63	5	2	2			1	
QP TI B	40	20	63	5	2	3				
QP TI B-1	40	20	63	4	2	1	1			
QP TI B-2	40	20	63	5	3	2				
QP TI C	63	35	63	5	3	1		1		
QP TI C-1	63	35	63	5	3	1			1	
QP TI C-2	63	35	63	5	2	1		1		1
QP TI D	63	35	63	5	1	3		1		

QC with SQV sockets series with fuse holder



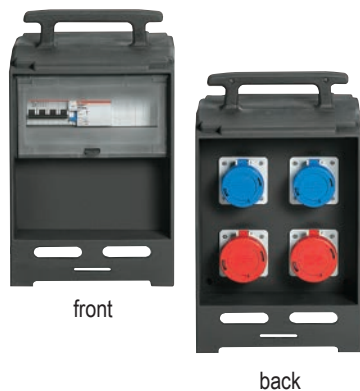
	magneto-thermal main switch with differential protection	maximum withdrawable active power values	wall plug 400V, 3P + N + $\underline{\underline{PE}}$ , 6h	n. socket-outlets	SQV 1663.5 16A, 250V, 2P + $\underline{\underline{PE}}$ , 6h	SQV 1664.5 16A, 400V, 3P + $\underline{\underline{PE}}$ , 6h	SQV 1665.5 16A, 400V, 3P + N + $\underline{\underline{PE}}$ , 6h	SQV 3264.5 16A, 400V, P + $\underline{\underline{PE}}$ , 6h	SQV 3265.5 16A, 400V, 3P + N + $\underline{\underline{PE}}$ , 6h	SQT 16220 16A, 24V, 2P, s.r.
	A	kW	A		●	●	●	●	●	●
QP SQ A	63	35	63	5	2	2		1		
QP SQ A-1	63	35	63	5	2	2			1	
QP SQ A-3	63	35	63	5	2	1	1		1	
QP SQ B	40	20	63	5	2	3				
QP SQ B-1	40	20	63	4	2	1	1			
QP SQ B-2	40	20	63	5	3	2				
QP SQ B-6	40	20	63	4	3		1			
QP SQ B-9	40	20	63	4	2	2				
QP SQ C	63	35	63	5	3	1		1		
QP SQ C-1	63	35	63	5	3	1			1	
QP SQ C-2	63	35	63	5	2	1		1		1



**QM Series**

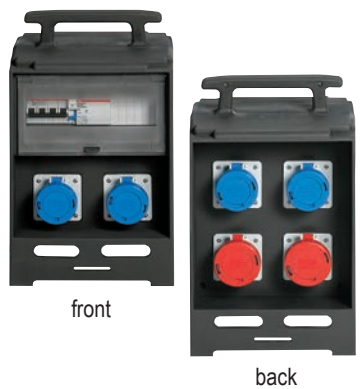
- with IP55 SCHUKO® sockets (according to EN 60529)

QM with 4 PEW...PQ/PQF socket-outlets



	A	kW	plug entry	n. socket-outlets	PEW 1663 PQF 16A, 230V, 2P + $\underline{\text{N}}$ , 6h	PEW 1164 PQF 16A, 400V, 3P + $\underline{\text{N}}$ , 6h	PEW 1665 PQ 16A, 230/400V, 3P + N + $\underline{\text{N}}$ , 6h	PEW 3264 PQ 32A, 400V, 3P + $\underline{\text{N}}$ , 6h	16A-2P + $\underline{\text{N}}$ Schuko® IP55
			magneto-thermal main switch with differential protection						
			maximum withdrawable active power values						
QM PA4	16	3	PEW 1663 SV	4	4				
QM PB4	16	9	PEW 1664 SV	4		4			
QM PC22	16	9	PEW 1665 SV	4	2	2			
QM PD22	16	3	PEW 1663 SV	4	2				2
QM PH211	16	9	PEW 1665 SV	4	2	1	1		
QM PI211	32	18	PEW 3265 SV	4	2	1		1	

QM with 6 PEW...PQ/PQF socket-outlets



	A	kW	plug entry	n. socket-outlets	PEW 1663 PQF 16A, 230V, 2P + $\underline{\text{N}}$ , 6h	PEW 1164 PQF 16A, 400V, 3P + $\underline{\text{N}}$ , 6h	PEW 1665 PQ 16A, 230/400V, 3P + N + $\underline{\text{N}}$ , 6h	PEW 3264 PQ 32A, 400V, 3P + $\underline{\text{N}}$ , 6h	16A-2P + $\underline{\text{N}}$ Schuko® IP55
			magneto-thermal main switch with differential protection						
			maximum withdrawable active power values						
QM PA6	16	3	PEW 1663 SV	6	6				
QM PC33	16	9	PEW 1665 SV	6	3	3			
QM PC42	16	9	PEW 1665 SV	6	4	2			
QM PH222	16	9	PEW 1665 SV	6	2	2	2		
QM PI222	32	18	PEW 3265 SV	6	2	2		2	
QM PL222	16	9	PEW 1665 SV	6	2	2			2

QM with 2 SQ type SQE socket-outlets



	A	kW	plug entry	n. socket-outlets	SQE 1663 PQF 16A, 230V, 2P + $\underline{\text{N}}$ , 6h	SQE 1164 PQF 16A, 400V, 3P + $\underline{\text{N}}$ , 6h	SQE 1665 PQ 16A, 230/400V, 3P + N + $\underline{\text{N}}$ , 6h	SQE 3264 PQ 32A, 400V, 3P + $\underline{\text{N}}$ , 6h	SQT 16220 16A, 24V, 2P + $\underline{\text{N}}$
			magneto-thermal main switch with differential protection						
			maximum withdrawable active power values						
QM SA2	16	3	PEW 1663 SV	2	2				
QM SB2	16	9	PEW 1665 SV	2		2			
QM SC11	16	9	PEW 1665 SV	2	1	1			
QM SE11	16	9	PEW 1665 SV	2	1		1		
QM SF11	32	18	PEW 3265 SV	2	1			1	
QM SG11	16	3	PEW 1665 SV	2	1				1



**WALL-MOUNTING PLUGS**



A	P	● 110V	● 230V	● 400V
16	3	PE 1643 SM	PE 1663 SM	PE 1693 SM
16	4	PE 1644 SM	PE 1694 SM	PE 1664 SM
16	5	PE 1645 SM	PE 1695 SM	PE 1665 SM
32	3	PE 3243 SM	PE 3263 SM	PE 3293 SM
32	4	PE 3244 SM	PE 3294 SM	PE 3264 SM
32	5	PE 3245 SM	PE 3295 SM	PE 3265 SM

**IP44**  
**PE...SM**  
screw connection



A	P	● 110V	● 230V	● 400V
16	3	PEW 1643 SM	PEW 1663 SM	PEW 1693 SM
16	4	PEW 1644 SM	PEW 1694 SM	PEW 1664 SM
16	5	PEW 1645 SM	PEW 1695 SM	PEW 1665 SM
32	3	PEW 3243 SM	PEW 3263 SM	PEW 3293 SM
32	4	PEW 3244 SM	PEW 3294 SM	PEW 3264 SM
32	5	PEW 3245 SM	PEW 3295 SM	PEW 3265 SM

**IP67**  
**PEW...SM**  
screw connection



A	P	● 110V	● 230V	● 400V
63	3	PEW 6343 SM	PEW 6363 SM	PEW 6393 SM
63	4	PEW 6344 SM	PEW 6394 SM	PEW 6364 SM
63	5	PEW 6345 SM	PEW 6395 SM	PEW 6365 SM

**IP67**  
**PEW...SM**  
screw connection



A	P	● 110V	● 230V	● 400V
125	3	PEW 12543 SM	PEW 12563 SM	PEW 12593 SM
125	4	PEW 12544 SM	PEW 12594 SM	PEW 12564 SM
125	5	PEW 12545 SM	PEW 12595 SM	PEW 12565 SM

**IP67**  
**PEW...SM**  
screw connection

**FLUSH-MOUNTING PLUGS**



A	P	● 110V	● 230V	● 400V
16	3	PE 1643 SI	PE 1663 SI	PE 1693 SI
16	4	PE 1644 SI	PE 1694 SI	PE 1664 SI
16	5	PE 1645 SI	PE 1695 SI	PE 1665 SI
32	3	PE 3243 SI	PE 3263 SI	PE 3293 SI
32	4	PE 3244 SI	PE 3294 SI	PE 3264 SI
32	5	PE 3245 SI	PE 3295 SI	PE 3265 SI

**IP44**  
**PE...SI**  
screw connection



A	P	● 110V	● 230V	● 400V
16	3	PEW 1643 SI	PEW 1663 SI	PEW 1693 SI
16	4	PEW 1644 SI	PEW 1694 SI	PEW 1664 SI
16	5	PEW 1645 SI	PEW 1695 SI	PEW 1665 SI
32	3	PEW 3243 SI	PEW 3263 SI	PEW 3293 SI
32	4	PEW 3244 SI	PEW 3294 SI	PEW 3264 SI
32	5	PEW 3245 SI	PEW 3295 SI	PEW 3265 SI

**IP67**  
**PEW...SI**  
screw connection



A	P	● 110V	● 230V	● 400V
63	3	PEW 6343 SI	PEW 6363 SI	PEW 6393 SI
63	4	PEW 6344 SI	PEW 6394 SI	PEW 6364 SI
63	5	PEW 6345 SI	PEW 6395 SI	PEW 6365 SI

**IP67**  
**PEW...SI**  
screw connection



A	P	● 110V	● 230V	● 400V
125	3	PEW 12543 SI	PEW 12563 SI	PEW 12593 SI
125	4	PEW 12544 SI	PEW 12594 SI	PEW 12564 SI
125	5	PEW 12545 SI	PEW 12595 SI	PEW 12565 SI

**IP67**  
**PEW...SI**  
screw connection

**ANGLED PLUGS**



A	P	● 110V	● 230V	● 400V
16	3	PE 1643 SA	PE 1663 SA	PE 1693 SA
16	4	PE 1644 SA	PE 1694 SA	PE 1664 SA
16	5	PE 1645 SA	PE 1695 SA	PE 1665 SA
32	3	PE 3243 SA	PE 3263 SA	PE 3293 SA
32	4	PE 3244 SA	PE 3294 SA	PE 3264 SA
32	5	PE 3245 SA	PE 3295 SA	PE 3265 SA

**IP44**  
**PE...SA**  
screw connection



A	P	● 110V	● 230V	● 400V
16	3	PEW 1643 SA	PEW 1663 SA	PEW 1693 SA
16	4	PEW 1644 SA	PEW 1694 SA	PEW 1664 SA
16	5	PEW 1645 SA	PEW 1695 SA	PEW 1665 SA
32	3	PEW 3243 SA	PEW 3263 SA	PEW 3293 SA
32	4	PEW 3244 SA	PEW 3294 SA	PEW 3264 SA
32	5	PEW 3245 SA	PEW 3295 SA	PEW 3265 SA

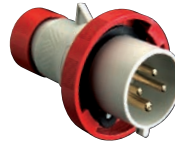
**IP67**  
**PEW...SA**  
screw connection

**PLUGS**



A	P	● 110V	● 230V	● 400V
16	3	PE 1643 SV	PE 1663 SV	PE 1693 SV
16	4	PE 1644 SV	PE 1694 SV	PE 1664 SV
16	5	PE 1645 SV	PE 1695 SV	PE 1665 SV
32	3	PE 3243 SV	PE 3263 SV	PE 3293 SV
32	4	PE 3244 SV	PE 3294 SV	PE 3264 SV
32	5	PE 3245 SV	PE 3295 SV	PE 3265 SV

**IP44**  
**PE...SV**  
screw connection



A	P	● 110V	● 230V	● 400V
16	3	PEW 1643 SV	PEW 1663 SV	PEW 1693 SV
16	4	PEW 1644 SV	PEW 1694 SV	PEW 1664 SV
16	5	PEW 1645 SV	PEW 1695 SV	PEW 1665 SV
32	3	PEW 3243 SV	PEW 3263 SV	PEW 3293 SV
32	4	PEW 3244 SV	PEW 3294 SV	PEW 3264 SV
32	5	PEW 3245 SV	PEW 3295 SV	PEW 3265 SV

**IP67**  
**PEW...SV**  
screw connection



A	P	● 110V	● 230V	● 400V
63	3	PEW 6343 SV	PEW 6363 SV	PEW 6393 SV
63	4	PEW 6344 SV	PEW 6394 SV	PEW 6364 SV
63	5	PEW 6345 SV	PEW 6395 SV	PEW 6365 SV

**IP67**  
**PEW...SV**  
screw connection



A	P	● 110V	● 230V	● 400V
125	3	PEW 12543 SV	PEW 12563 SV	PEW 12593 SV
125	4	PEW 12544 SV	PEW 12594 SV	PEW 12564 SV
125	5	PEW 12545 SV	PEW 12595 SV	PEW 12565 SV

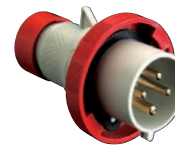
**IP67**  
**PEW...SV**  
screw connection

**PLUGS - SQUICH® CONNECTION**



A	P	● 110V	● 230V	● 400V
16	3	PES 1643 SV	PES 1663 SV	PES 1693 SV
16	4	PES 1644 SV	PES 1694 SV	PES 1664 SV
16	5	PES 1645 SV	PES 1695 SV	PES 1665 SV

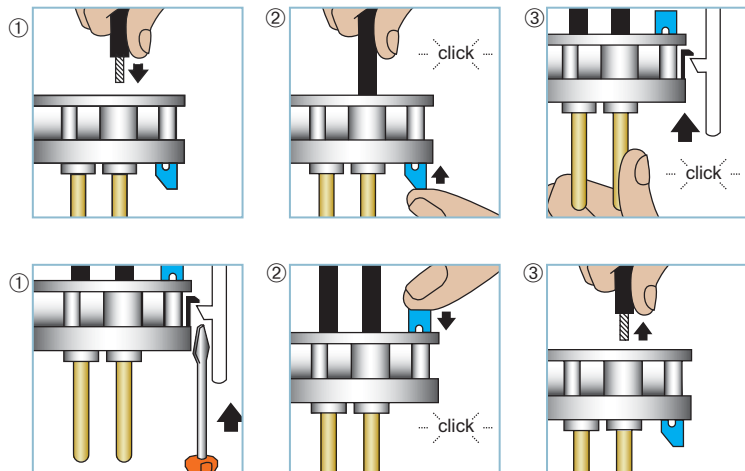
**IP44**  
**PES...SV**  
Squich® connection



A	P	● 110V	● 230V	● 400V
16	3	PESW 1643 SV	PESW 1663 SV	PESW 1693 SV
16	4	PESW 1644 SV	PESW 1694 SV	PESW 1664 SV
16	5	PESW 1645 SV	PESW 1695 SV	PESW 1665 SV

**IP67**  
**PESW...SV**  
Squich® connection

**SQUICH® Connection - Time saver**



**60% quicker in connection time**

**WALL-MOUNTING SOCKETS**



A	P	● 110V	● 230V	● 400V
16	3	PE 1643 PP	PE 1663 PP	PE 1693 PP
16	4	PE 1644 PP	PE 1694 PP	PE 1664 PP
16	5	PE 1645 PP	PE 1695 PP	PE 1665 PP
32	3	PE 3243 PP	PE 3263 PP	PE 3293 PP
32	4	PE 3244 PP	PE 3294 PP	PE 3264 PP
32	5	PE 3245 PP	PE 3295 PP	PE 3265 PP

**IP44**  
**PE...PP**  
screw connection



A	P	● 110V	● 230V	● 400V
63	3	PEW 6343 PP	PEW 6363 PP	PEW 6393 PP
63	4	PEW 6344 PP	PEW 6394 PP	PEW 6364 PP
63	5	PEW 6345 PP	PEW 6395 PP	PEW 6365 PP

**IP67**  
**PEW...PP**  
screw connection



A	P	● 110V	● 230V	● 400V
16	3	PEW 1643 PP	PEW 1663 PP	PEW 1693 PP
16	4	PEW 1644 PP	PEW 1694 PP	PEW 1664 PP
16	5	PEW 1645 PP	PEW 1695 PP	PEW 1665 PP
32	3	PEW 3243 PP	PEW 3263 PP	PEW 3293 PP
32	4	PEW 3244 PP	PEW 3294 PP	PEW 3264 PP
32	5	PEW 3245 PP	PEW 3295 PP	PEW 3265 PP

**IP67**  
**PEW...PP**  
screw connection

A	P	● 110V	● 230V	● 400V
125	3	PEW 12543 PP	PEW 12563 PP	PEW 12593 PP
125	4	PEW 12544 PP	PEW 12594 PP	PEW 12564 PP
125	5	PEW 12545 PP	PEW 12595 PP	PEW 12565 PP

**IP67**  
**PEW...PP**  
screw connection

**STRAIGHT FLUSH-MOUNTING SOCKETS**



A	P	● 110V	● 230V	● 400V
16	3	PE 1643 PQ	PE 1663 PQ	PE 1693 PQ
16	4	PE 1644 PQ	PE 1694 PQ	PE 1664 PQ
16	5	PE 1645 PQ	PE 1695 PQ	PE 1665 PQ
32	3	PE 3243 PQ	PE 3263 PQ	PE 3293 PQ
32	4	PE 3244 PQ	PE 3294 PQ	PE 3264 PQ
32	5	PE 3245 PQ	PE 3295 PQ	PE 3265 PQ

**IP44**  
**PE..PQ**  
screw connection

**IP67**  
**PEW...PQ**  
screw connection

A	P	● 110V	● 230V	● 400V
63	3	PEW 6343 PQ	PEW 6363 PQ	PEW 6393 PQ
63	4	PEW 6344 PQ	PEW 6394 PQ	PEW 6364 PQ
63	5	PEW 6345 PQ	PEW 6395 PQ	PEW 6365 PQ



A	P	● 110V	● 230V	● 400V
16	3	PEW 1643 PQ	PEW 1663 PQ	PEW 1693 PQ
16	4	PEW 1644 PQ	PEW 1694 PQ	PEW 1664 PQ
16	5	PEW 1645 PQ	PEW 1695 PQ	PEW 1665 PQ
32	3	PEW 3243 PQ	PEW 3263 PQ	PEW 3293 PQ
32	4	PEW 3244 PQ	PEW 3294 PQ	PEW 3264 PQ
32	5	PEW 3245 PQ	PEW 3295 PQ	PEW 3265 PQ

**IP67**  
**PEW...PQ**  
screw connection

**IP67**  
**PEW...PQ**  
screw connection

A	P	● 110V	● 230V	● 400V
125	3	PEW 12543 PQ	PEW 12563 PQ	PEW 12593 PQ
125	4	PEW 12544 PQ	PEW 12594 PQ	PEW 12564 PQ
125	5	PEW 12545 PQ	PEW 12595 PQ	PEW 12565 PQ

**INCLINED FLUSH-MOUNTING SOCKETS**



A	P	● 110V	● 230V	● 400V
16	3	PE 1643 PI	PE 1663 PI	PE 1693 PI
16	4	PE 1644 PI	PE 1694 PI	PE 1664 PI
16	5	PE 1645 PI	PE 1695 PI	PE 1665 PI
32	3	PE 3243 PI	PE 3263 PI	PE 3293 PI
32	4	PE 3244 PI	PE 3294 PI	PE 3264 PI
32	5	PE 3245 PI	PE 3295 PI	PE 3265 PI

**IP44**  
**PE..PI**  
screw connection

**IP67**  
**PEW...PI**  
screw connection

A	P	● 110V	● 230V	● 400V
63	3	PEW 6343 PI	PEW 6363 PI	PEW 6393 PI
63	4	PEW 6344 PI	PEW 6394 PI	PEW 6364 PI
63	5	PEW 6345 PI	PEW 6395 PI	PEW 6365 PI



A	P	● 110V	● 230V	● 400V
16	3	PEW 1643 PI	PEW 1663 PI	PEW 1693 PI
16	4	PEW 1644 PI	PEW 1694 PI	PEW 1664 PI
16	5	PEW 1645 PI	PEW 1695 PI	PEW 1665 PI
32	3	PEW 3243 PI	PEW 3263 PI	PEW 3293 PI
32	4	PEW 3244 PI	PEW 3294 PI	PEW 3264 PI
32	5	PEW 3245 PI	PEW 3295 PI	PEW 3265 PI

**IP67**  
**PEW...PI**  
screw connection

**IP67**  
**PEW...PI**  
screw connection

A	P	● 110V	● 230V	● 400V
125	3	PEW 12543 PI	PEW 12563 PI	PEW 12593 PI
125	4	PEW 12544 PI	PEW 12594 PI	PEW 12564 PI
125	5	PEW 12545 PI	PEW 12595 PI	PEW 12565 PI

**COUPLERS**



A	P	● 110V	● 230V	● 400V
16	3	PE 1643 PV	PE 1663 PV	PE 1693 PV
16	4	PE 1644 PV	PE 1694 SV	PE 1664 PV
16	5	PE 1645 PV	PE 1695 PV	PE 1665 PV
32	3	PE 3243 PV	PE 3263 PV	PE 3293 PV
32	4	PE 3244 PV	PE 3294 PV	PE 3264 PV
32	5	PE 3245 PV	PE 3295 PV	PE 3265 PV

**IP44**  
**PE...PV**  
screw connection



A	P	● 110V	● 230V	● 400V
16	3	PEW 1643 PV	PEW 1663 PV	PEW 1693 PV
16	4	PEW 1644 PV	PEW 1694 PV	PEW 1664 PV
16	5	PEW 1645 PV	PEW 1695 PV	PEW 1665 PV
32	3	PEW 3243 PV	PEW 3263 PV	PEW 3293 PV
32	4	PEW 3244 PV	PEW 3294 PV	PEW 3264 PV
32	5	PEW 3245 PV	PEW 3295 PV	PEW 3265 PV

**IP67**  
**PEW...PV**  
screw connection



A	P	● 110V	● 230V	● 400V
63	3	PEW 6343 PV	PEW 6363 PV	PEW 6393 PV
63	4	PEW 6344 PV	PEW 6394 PV	PEW 6364 PV
63	5	PEW 6345 PV	PEW 6395 PV	PEW 6365 PV

**IP67**  
**PEW...PV**  
screw connection



A	P	● 110V	● 230V	● 400V
125	3	PEW 12543 PV	PEW 12563 PV	PEW 12593 PV
125	4	PEW 12544 PV	PEW 12594 PV	PEW 12564 PV
125	5	PEW 12545 PV	PEW 12595 PV	PEW 12565 PV

**IP67**  
**PEW...PV**  
screw connection

**COUPLERS - SQUICH® CONNECTION**



A	P	● 110V	● 230V	● 400V
16	3	PES 1643 PV	PES 1663 PV	PES 1693 PV
16	4	PES 1644 PV	PES 1694 PV	PES 1664 PV
16	5	PES 1645 PV	PES 1695 PV	PES 1665 PV

**IP44**  
**PES...PV**  
Squich® connection

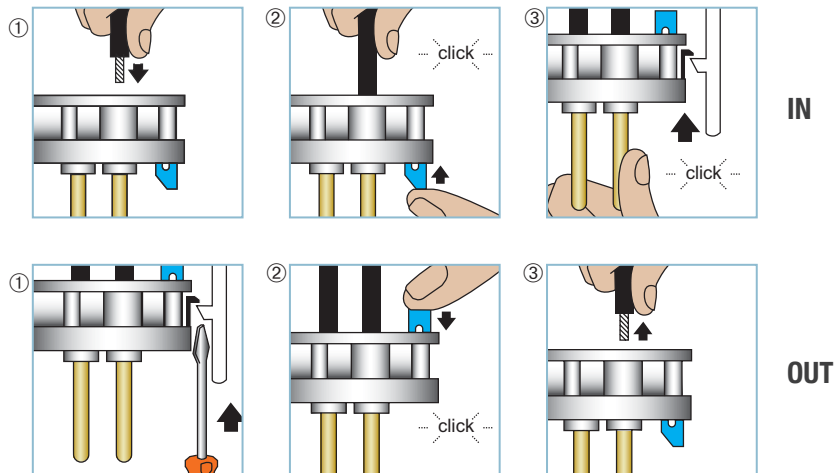


A	P	● 110V	● 230V	● 400V
16	3	PESW 1643 PV	PESW 1663 PV	PESW 1693 PV
16	4	PESW 1644 PV	PESW 1694 PV	PESW 1664 PV
16	5	PESW 1645 PV	PESW 1695 PV	PESW 1665 PV

**IP67**  
**PESW...PV**  
Squich® connection



**SQUICH® Connection - Time saver**



**60% quicker in connection time**



**WALL-MOUNTING PLUGS**



A	P	● 110V	● 230V	● 400V
16	5	-	-	SIP 1665 SM
32	5	-	-	SIP 3265 SM

**IP44**  
**SIP...SM**  
screw connection



A	P	● 110V	● 230V	● 400V
16	5	-	-	SIPW 1665 SM
32	5	-	-	SIPW 3265 SM

**IP67**  
**SIPW...SM**  
screw connection

**FLUSH-MOUNTING PLUGS**



A	P	● 110V	● 230V	● 400V
16	5	-	-	SIP 1665 SI
32	5	-	-	SIP 3265 SI

**IP44**  
**SIP...SI**  
screw connection



A	P	● 110V	● 230V	● 400V
16	5	-	-	SIPW 1665 SI
32	5	-	-	SIPW 3265 SI

**IP67**  
**SIPW...SI**  
screw connection

**PLUGS**



A	P	● 110V	● 230V	● 400V
16	5	SIP 1645 SV	SIP 1695 SV	SIP 1665 SV
32	5	SIP 3245 SV	SIP 3295 SV	SIP 3265 SV

**IP44**  
**SIP...SV**  
screw connection



A	P	● 110V	● 230V	● 400V
16	5	SIPW 1645 SV	SIPW 1695 SV	SIPW 1665 SV
32	5	SIPW 3245 SV	SIPW 3295 SV	SIPW 3265 SV

**IP67**  
**SIPW...SV**  
screw connection



**Phase inverter**

SIP plugs incorporate a mechanical device that exchanges the position of the pins of phases L2 and L3 (phase inverter); this enables the phase cycles to be adapted to the required direction of rotation of three-phase motors. The device can be regulated on the contact side using a screwdriver without having to disassemble the plug.

**PLUGS**



A	P	● 110V	● 230V	● 400V
16	3	-	PN 1663 SV	-
16	4	-	-	PN 1664 SV
16	5	-	-	PN 1665 SV
32	3	-	PN 3263 SV	-
32	4	-	-	PN 3264 SV
32	5	-	-	PN 3265 SV

**IP44**  
**PN...SV**  
screw connection

**COUPLERS**



A	P	● 110V	● 230V	● 400V
16	3	-	PN 1663 PV	-
16	4	-	-	PN 1664 PV
16	5	-	-	PN 1665 PV
32	3	-	PN 3263 PV	-
32	4	-	-	PN 3264 PV
32	5	-	-	PN 3265 PV

**IP44**  
**PN...PV**  
screw connection

**STRAIGHT FLUSH-MOUNTING SOCKETS**



A	P	● 110V	● 230V	● 400V
16	3	-	PN 1663 PQ	-
16	4	-	-	PN 1664 PQ
16	5	-	-	PN 1665 PQ
32	3	-	PN 3263 PQ	-
32	4	-	-	PN 3264 PQ
32	5	-	-	PN 3265 PQ

**IP44**  
**PN...PQ**  
screw connection

**INCLINED FLUSH-MOUNTING SOCKETS**



A	P	● 110V	● 230V	● 400V
16	3	-	PN 1663 PI	-
16	4	-	-	PN 1664 PI
16	5	-	-	PN 1665 PI
32	3	-	PN 3263 PI	-
32	4	-	-	PN 3264 PI
32	5	-	-	PN 3265 PI

**IP44**  
**PN...PI**  
screw connection

**pluso** Low voltage plugs and socket-outlets for industrial purposes



**PLUGS**



A	P	● 110V	● 230V	● 400V
16	3	PEW 1643 SVX	PEW 1663 SVX	PEW 1693 SVX
16	4	PEW 1644 SVX	PEW 1694 SVX	PEW 1664 SVX
16	5	PEW 1645 SVX	PEW 1695 SVX	PEW 1665 SVX
32	3	PEW 3243 SVX	PEW 3263 SVX	PEW 3293 SVX
32	4	PEW 3244 SVX	PEW 3294 SVX	PEW 3264 SVX
32	5	PEW 3245 SVX	PEW 3295 SVX	PEW 3265 SVX

**IP66/IP67**  
**PEW...SVX**  
screw connection

II 3D - Ex tc IIIC T60 °C  
Dc IP66/IP67 X



A	P	● 110V	● 230V	● 400V
63	3	PEW 6343 SVX	PEW 6363 SVX	PEW 6393 SVX
63	4	PEW 6344 SVX	PEW 6394 SVX	PEW 6364 SVX
63	5	PEW 6345 SVX	PEW 6395 SVX	PEW 6365 SVX

**IP66/IP67**  
**PEW...SVX**  
screw connection

II 3D - Ex tc IIIC T60 °C  
Dc IP66/IP67 X

**STRAIGHT FLUSH-MOUNTING SOCKETS**



A	P	● 110V	● 230V	● 400V
16	3	PE 1643 PQF	PE 1663 PQF	PE 1693 PQF
16	4	PE 1644 PQF	PE 1694 PQF	PE 1664 PQF
16	5	PE 1645 PQ	PE 1695 PQ	PE 1665 PQ
32	3	PE 3243 PQ	PE 3263 PQ	PE 3293 PQ
32	4	PE 3244 PQ	PE 3294 PQ	PE 3264 PQ
32	5	PE 3245 PQ	PE 3295 PQ	PE 3265 PQ

**IP44**  
**PE...PQF/PQ** ▲  
 screw connection



A	P	● 110V	● 230V	● 400V
16	3	PEW 1643 PQF	PEW 1663 PQF	PEW 1693 PQF
16	4	PEW 1644 PQF	PEW 1694 PQF	PEW 1664 PQF
16	5	PEW 1645 PQ	PEW 1695 PQ	PEW 1665 PQ
32	3	PEW 3243 PQ	PEW 3263 PQ	PEW 3293 PQ
32	4	PEW 3244 PQ	PEW 3294 PQ	PEW 3264 PQ
32	5	PEW 3245 PQ	PEW 3295 PQ	PEW 3265 PQ

**IP67**  
**PEW...PQF/PQ** ▲  
 screw connection

**INCLINED FLUSH-MOUNTING SOCKETS**



A	P	● 110V	● 230V	● 400V
16	3	PE 1643 PIF	PE 1663 PIF	PE 1693 PIF
16	4	PE 1644 PIF	PE 1694 PIF	PE 1664 PIF
16	5	PE 1645 PI	PE 1695 PI	PE 1665 PI
32	3	PE 3243 PI	PE 3263 PI	PE 3293 PI
32	4	PE 3244 PI	PE 3294 PI	PE 3264 PI
32	5	PE 3245 PI	PE 3295 PI	PE 3265 PI

**IP44**  
**PE...PIF/PI** ○  
 screw connection



A	P	● 110V	● 230V	● 400V
16	3	PEW 1643 PIF	PEW 1663 PIF	PEW 1693 PIF
16	4	PEW 1644 PIF	PEW 1694 PIF	PEW 1664 PIF
16	5	PEW 1645 PI	PEW 1695 PI	PEW 1665 PI
32	3	PEW 3243 PI	PEW 3263 PI	PEW 3293 PI
32	4	PEW 3244 PI	PEW 3294 PI	PEW 3264 PI
32	5	PEW 3245 PI	PEW 3295 PI	PEW 3265 PI

**IP67**  
**PEW...PIF/PI** ○  
 screw connection

A	P	● 110V	● 230V	● 400V
16	3	PE 1643 PI	PE 1663 PI	PE 1693 PI
16	4	PE 1644 PI	PE 1694 PI	PE 1664 PI

**IP44**  
**PE...PI** ●  
 screw connection

A	P	● 110V	● 230V	● 400V
16	3	PEW 1643 PI	PEW 1663 PI	PEW 1693 PI
16	4	PEW 1644 PI	PEW 1694 PI	PEW 1664 PI

**IP67**  
**PEW...PI** ●  
 screw connection

QM - MOBILE PQ FOR SOCKETS



FM - PI BOXES FOR SOCKETS



FM - PQ/PI BOXES FOR SOCKETS



**Fixing distance**

- 52x60 mm
- ▲ 60x60 mm
- 77x85 mm



**WALL-MOUNTING SOCKETS**



A	P	● 20÷25V ~ 50 and 60 Hz	○ 40÷50V ~ 50 and 60 Hz	● 20÷25V/40÷50V~ 100÷200 Hz
16	2	PB 16002 PP	PB 16122 PP	PB 16042 PP
16	3	PB 16003 PP	PB 16123 PP	PB 16043 PP
32	2	PB 32002 PP	PB 32122 PP	PB 32042 PP
32	3	PB 32003 PP	PB 32123 PP	PB 32043 PP

**IP44  
PB...PP**

A	P	-	○ 20÷25V/40÷50V C.C.	● 20÷25V/40÷50V~ 400÷500 Hz
16	2	-	PB 16102 PP	PB 16112 PP
16	3	-	-	PB 16113 PP
32	2	-	PB 32102 PP	PB 32112 PP
32	3	-	-	PB 32113 PP

**FLUSH-MOUNTING SOCKETS**



A	P	● 20÷25V ~ 50 and 60 Hz	○ 40÷50V ~ 50 and 60 Hz	● 20÷25V/40÷50V~ 100÷200 Hz
16	2	PB 16002 PI	PB 16122 PI	PB 16043 PI
16	3	PB 16003 PI	PB 16123 PI	PB 16043 PI
32	2	PB 32002 PI	PB 32122 PI	PB 32042 PI
32	3	PB 32003 PI	PB 32123 PI	PB 32043 PI

**IP44  
PB...PI**

A	P	-	○ 20÷25V/40÷50V C.C.	● 20÷25V/40÷50V~ 400÷500 Hz
16	2	-	PB 16102 PI	PB 16112 PI
16	3	-	-	PB 16113 PI
32	2	-	PB 32102 PI	PB 32112 PI
32	3	-	-	PB 32113 PI

**COUPLERS**



A	P	● 20÷25V ~ 50 and 60 Hz	○ 40÷50V ~ 50 and 60 Hz	● 20÷25V/40÷50V~ 100÷200 Hz
16	2	PB 16002 PV	PB 16122 PV	PB 16042 PV
16	3	PB 16003 PV	PB 16123 PV	PB 16043 PV
32	2	PB 32002 PV	PB 32122 PV	PB 32042 PV
32	3	PB 32003 PV	PB 32123 PV	PB 32043 PV

**IP44  
PB...PV**

A	P	-	○ 20÷25V/40÷50V C.C.	● 20÷25V/40÷50V~ 400÷500 Hz
16	2	-	PB 16102 PV	PB 16112 PV
16	3	-	-	PB 16113 PV
32	2	-	PB 32102 PV	PB 32112 PV
32	3	-	-	PB 32113 PV

**FLUSH-MOUNTING SOCKETS**



A	P	● 20÷25V ~ 50 and 60 Hz	○ 40÷50V ~ 50 and 60 Hz	-
16	2	PB 16002 PT	-	-
16	3	-	-	-
32	2	-	PB 32122 PT	-
32	3	-	-	-

**IP44  
PB...PT**  
with microswitch  
on plug insertion

**PLUGS**



A	P	● 20÷25V ~ 50 and 60 Hz	○ 40÷50V ~ 50 and 60 Hz	● 20÷25V/40÷50V~ 100÷200 Hz
16	2	PB 16002 SV	PB 16122 SV	PB 16042 SV
16	3	PB 16003 SV	PB 16123 SV	PB 16043 SV
32	2	PB 32002 SV	PB 32122 SV	PB 32042 SV
32	3	PB 32003 SV	PB 32123 SV	PB 32043 SV

**IP44  
PB...SV**

A	P	-	○ 20÷25V/40÷50V C.C.	● 20÷25V/40÷50V~ 400÷500 Hz
16	2	-	PB 16102 SV	PB 16112 SV
16	3	-	-	PB 16113 SV
32	2	-	PB 32102 SV	PB 32112 SV
32	3	-	-	PB 32113 SV

**WALL-MOUNTING PLUGS**



A	P	● 20÷25V ~ 50 and 60 Hz	○ 40÷50V ~ 50 and 60 Hz	● 20÷25V/40÷50V~ 100÷200 Hz
16	2	PB 16002 SM	PB 16122 SM	PB 16042 SM
16	3	PB 16003 SM	PB 16123 SM	PB 16043 SM
32	2	PB 32002 SM	PB 32122 SM	PB 32042 SM
32	3	PB 32003 SM	PB 32123 SM	PB 32043 SM

**IP44  
PB...SM**

A	P	-	○ 20÷25V/40÷50V C.C.	● 20÷25V/40÷50V~ 400÷500 Hz
16	2	-	PB 16102 SM	PB 16112 SM
16	3	-	-	PB 16113 SM
32	2	-	PB 32102 SM	PB 32112 SM
32	3	-	-	PB 32113 SM

TM...ST1 without base box



A	P	● 24V
16	2	TM 16220 ST1

**IP66/IP67**  
**16A**  
with transformer

TM...T1 wall-mounting (with single box)



A	P	● 24V
16	2	TM 16220 T1

**IP66/IP67**  
**16A**  
with transformer

PB...T1/T2 wall-mounting



A	P	● 24V
16	2	PB 16220 T1
16	2	PB 16220 T2

**IP44**  
**16A**  
with transformer

PB...A1/A2 metal enclosures



A	P	● 24V
16	2	PB 16220 A1
16	2	PB 16220 A2

**IP44**  
**16A**  
with transformer

SQT to be mounted in single or multiple boxes



A	P	● 24V
16	2	SQT 16220

**IP55**  
**16A**  
with transformer

BT to be mounted in single or multiple boxes



A	P	● 24V
16	2	BT 16220

**IP66/IP67**  
**16A**  
with transformer

according to European standards EN 60309-1 and -2 - 16A, 32A, 63A, 125A - 2, 3, 4, 5 poles low and extra low voltage

**low voltage over 50V up to 1000V**

Number of poles	Frequency Hz	Rated operating voltage V	Hour position (h) earthing contact (1)		Colour
			16A and 32A	63A and 125A	
2P+⊕	50 and 60	100 ÷ 130	4	4	yellow
		200 ÷ 250	6	6	blue
		380 ÷ 415	9	9	red
	50 and 60	480 ÷ 500	7	7	black
		supply from isol. transformer	12	12	(5)
	100 ÷ 300	> 50	10	10	(4)
> 300 ÷ 500	> 50	2	2	(4)	
direct current	> 50 ÷ 250 (6)	3	3	(5)	
	> 250	8	8	(5)	
3P+⊕		supply from isol. transformer	12	12	(5)
	50 and 60	100 ÷ 130	4	4	yellow
		200 ÷ 250	9	9	blue
		380 ÷ 415	6	6	red
	60	440 ÷ 460 (2)	11	11	red
		480 ÷ 500	7	7	black
	50 and 60	600 ÷ 690	5	5	black
		380	3	3	red
	60	440 (3)	3	3	red
	50 and 60	1000	--	8	black
	100 ÷ 300	> 50	10	10	(4)
> 300 ÷ 500	> 50	2	2	(4)	
3P+N+⊕	50 and 60	57/100 ÷ 75/130	4	4	yellow
		120/208 ÷ 144/250	9	9	blue
		200/346 ÷ 240/415	6	6	red
		277/480 ÷ 288/500	7	7	black
		347/600 ÷ 400/690	5	5	black
	60	250/440 ÷ 265/460 (2)	11	11	red
	50	220/380	3	3	red
	60	250/440 (3)	3	3	red
	50 and 60	supply from isol. transformer	12	12	(5)
	100 ÷ 300	> 50	10	10	(4)
> 300 ÷ 500	> 50	2	2	(4)	
all types	All rated operating voltages and/or frequencies not covered by other configurations. In addition, this hour position can be used in special applications where a distinction is required with respect to the other standardised positions.		1	1	(5)

- (1) The positions indicated with dashes "-" are not standardised.
- (2) Mainly for marine installations.
- (3) Only for refrigerated containers (standardised by ISO).
- (4) If necessary, green may be used together with the colour of the operating voltage for frequencies of over 60 Hz up to 500 Hz inclusive.
- (5) Colour according to voltage.
- (6) This configuration must have an earthing contact as it covers voltages higher than the upper limits of the ELV (d.c.) according to IEC 60364-4-41.

**extra low voltage up to 50V**

Number of poles	Frequency Hz	Rated operating voltage V	Hour position (h) earthing contact (7)		Colour
			16A	32A	
2P	50 and 60	20 ÷ 25	no key way	no key way	violet
	50 and 60	40 ÷ 50	12	12	white
	> 100 ÷ 200	20 ÷ 25 and 40 ÷ 50	4	4	(8)
	300	20 ÷ 25 and 40 ÷ 50	2	2	(8)
	400	20 ÷ 25 and 40 ÷ 50	3	3	(8)
	> 400 ÷ 500	20 ÷ 25 and 40 ÷ 50	11	11	(8)
	c.c.	20 ÷ 25 and 40 ÷ 50	10	10	white
3P	50 and 60	20 ÷ 25	no key way	no key way	violet
	50 and 60	40 ÷ 50	12	12	white
	> 100 ÷ 200	20 ÷ 25 and 40 ÷ 50	4	4	(8)
	300	20 ÷ 25 and 40 ÷ 50	2	2	(8)
	400	20 ÷ 25 and 40 ÷ 50	3	3	(8)
	> 400 ÷ 500	20 ÷ 25 and 40 ÷ 50	11	11	(8)
	c.c. (9)	25	--	8	violet

- (7) the positions h 1-8 and 9 are reserved for future standardisation; for construction reasons, position h 5-6 and 7 cannot be used
- (8) for frequencies over 60 Hz up to 500 Hz inclusive, green can be used, if necessary, together with the colour of the operating voltage.
- (9) for portable electric incubators - at 12 V d.c. or 24 V d.c. in ambulances or helicopters.

Numbers indicated with letter h specify the orientation of the earthing contact or auxiliary reference, according to the hour position which can be seen when the socket is viewed from the front by placing the reference point in correspondance to hour 6.

The indicated colours are foreseen by the specification according to the operating voltage; the colouring may be limited to a part of the device.

The degrees of protection are obtained:

- for the sockets: with the plug fitted or when the lid is closed
- for the plugs: when inserted into the sockets.

63A - 125A plugs and sockets are equipped with a pilot contact to drive an electric interlock.

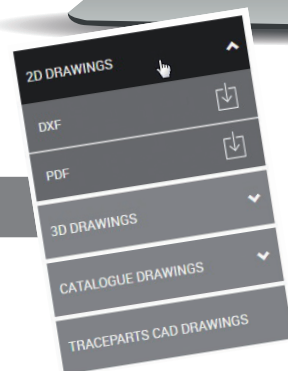
# Visit our website with new functionalities!

[www.ilme.com](http://www.ilme.com)



ON-LINE CONFIGURATOR

CAD DRAWINGS

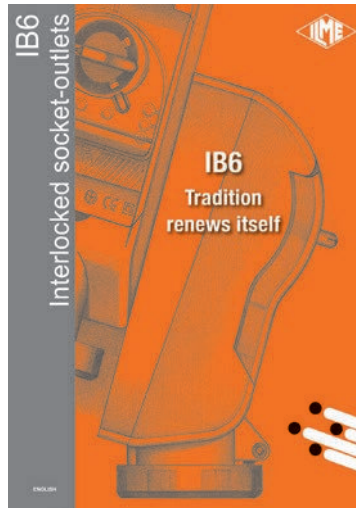


TOTALLY WEB ADAPTIVE

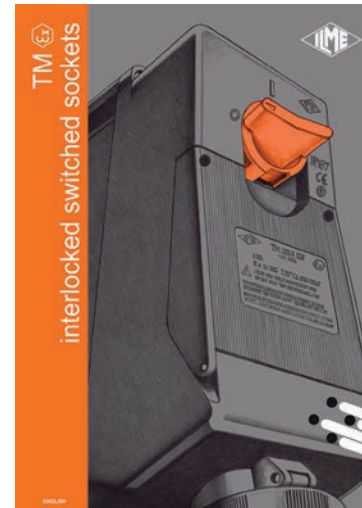




**PES**  
Save time - Squich® connection



**IB6**  
Tradition renews itself



**TM ATEX**  
Potentially explosive atmospheres



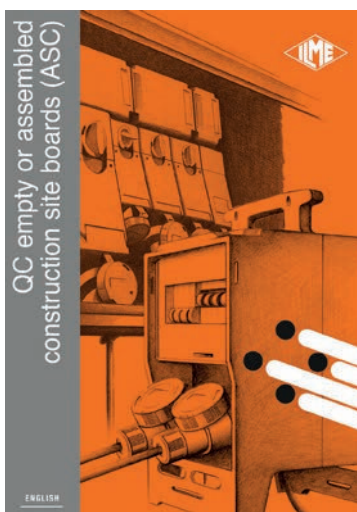
**SOCKET AND PLUGS**  
Sockets and Plugs



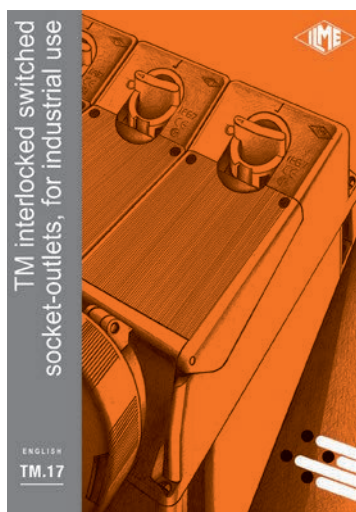
**SQV**  
Interlocked socket-outlets



**BK**  
Interlocked socket-outlets



**QC**  
ASC Site boards



**TM.17**  
Interlocked switched sockets



**PE SURVEY**  
Summary for distributors

<b>Headquarters</b>	<b>ILME S.p.A.</b> Via M.A.Colonna, 9 20149 Milano - Italy T +39 02345605.22 info@ilme.com
<b>France</b>	<b>ILME FRANCE S.A.R.L.</b> Rue Roland Garros - BP 125 Parc d'Activités de l'Aéroport 42160 Andrézieux-Bouthéon T +33 (0) 4 77 36 23 36 ilme-france@ilme.fr
<b>Germany</b>	<b>ILME GmbH</b> Max-Planck-Straße 12 51674 Wiehl T +49 (0)2261 - 7955-0 technik@ilme.de
<b>Sweden and Nordic Countries</b>	<b>ILME NORDIC AB</b> Transportvägen 18 24642 Löddeköpinge T +46 46 18 28 00 info@ilme.se
<b>United Kingdom</b>	<b>ILME UK LIMITED</b> 50 Evans Road, Venture Point Speke, Merseyside L24 9PB T +44 (0) 151 3369321 sales@ilmeuk.co.uk
<b>China</b>	<b>ILME CHINA CO. LTD.</b> Room 307, D area, No. 245, Xin Jun Huan Road, MinHang Dis 201114 Shanghai T +86 21 6248 9961 info@ilmechina.com
<b>Japan</b>	<b>ILME JAPAN CO. LTD.</b> Kobe International Business Center - 650-0047, 5-2, 5 - Chome, Minatojima Minami-Machi - Chuo-Ku, Kobe T +81 7830 22005 info@ilmejapan.co.jp

[www.ilme.com](http://www.ilme.com)

XDG RPE 118



catalogues